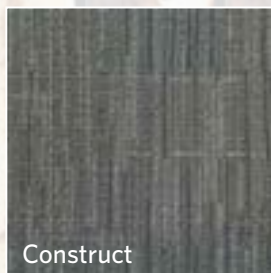


Engineered



Zoning



Construct

**ARCHITECTURALLY
SOUND2.0**

Engineered / Zoning / Construct



Milliken[®]

Engineered



EN144-108 Minimalism

Zoning



ZO144-108 Minimalism

Construct



CO144-108 Minimalism



Engineered, Zoning & Construct in *Minimalism*, monolithic installation



Engineered in Romanticism, monolithic installation



Zoning in Romanticism, monolithic installation



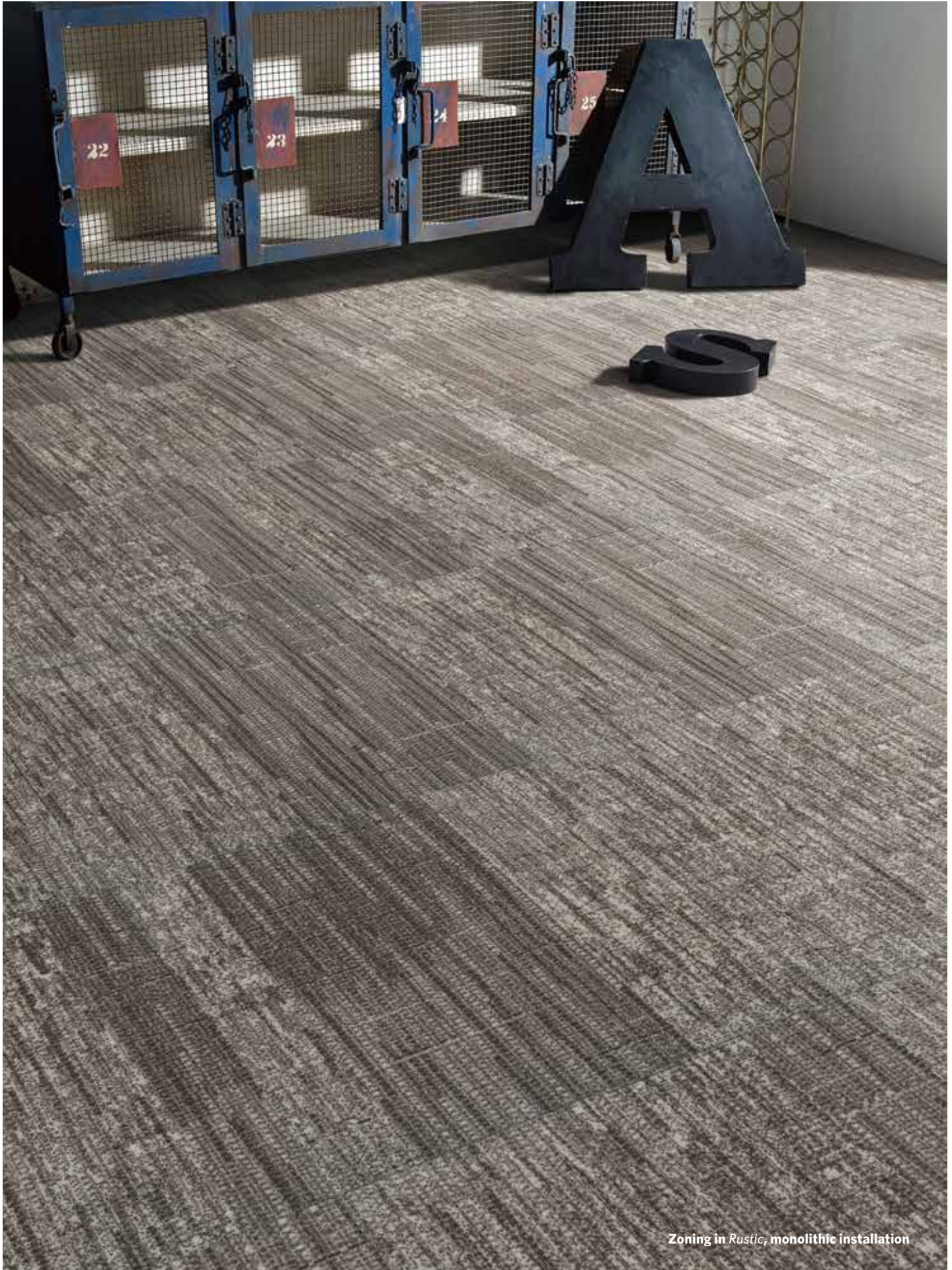
Construct in Romanticism, monolithic installation



Zoning in Industrial, monolithic installation



Construct in *Beaux-Arts*, monolithic installation



Zoning in *Rustic*, monolithic installation



Engineered & Zoning in *Realism*, monolithic installation



Zoning & Construct in *Rustic*, monolithic installation

Engineered



EN153-13 Contemporary

Zoning



ZO153-13 Contemporary



Engineered & Zoning in *Contemporary*, monolithic installation

COLORLINE



EN204-15 Country



Z0204-15 Country



CO204-15 Country



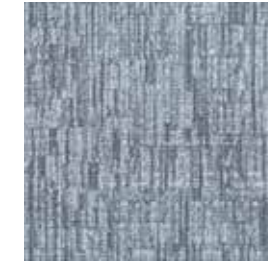
EN144-108 Minimalism



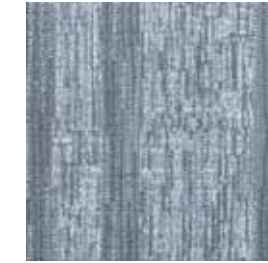
Z0144-108 Minimalism



CO144-108 Minimalism



EN215-153 Industrial



Z0215-153 Industrial



CO215-153 Industrial



EN4-15 Romanticism



Z04-15 Romanticism



CO4-15 Romanticism



EN48-5 Beaux-Arts



Z048-5 Beaux-Arts



CO48-5 Beaux-Arts



EN153-13 Contemporary



Z0153-13 Contemporary



CO153-13 Contemporary



EN213-124 Rustic



Z0213-124 Rustic



CO213-124 Rustic



EN219-153 Scandinavian



Z0219-153 Scandinavian



CO219-153 Scandinavian



EN13-119 Realism



Z013-119 Realism



CO13-119 Realism



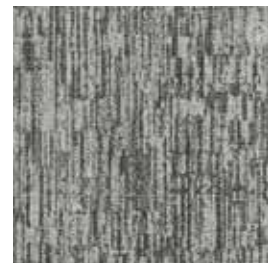
EN259-178 Bauhaus



Z0259-178 Bauhaus



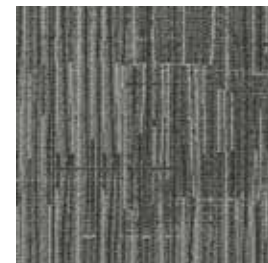
CO259-178 Bauhaus



EN218-119 Modernism



Z0218-119 Modernism



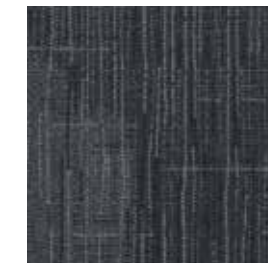
CO218-119 Modernism



EN13-79 Mid-Century



Z013-79 Mid-Century



CO13-79 Mid-Century



Architecturally Sound 2.0

Engineered / Zoning / Construct

SPECIFICATION

Construction - Tufted, Textured Loop

Tile Size - 50cm X 50cm (19.7" X 19.7")

Face Fiber - 100% Milliken Certified Nylon

Dye Method - Millitron®

Standard Backing - PVC-Free WellBAC™ Comfort
PVC-Free WellBAC™ Function
Available with TractionBack®

Nominal Total Thickness - 8.5 mm AVG.
5.8 mm AVG.

Stain Repel/Stain Resist/Soil Release - StainSmart®

Flammability - ≥ 0.45 (Class I)

Texture Appearance Retention Rating (TARR) - Severe
Heavy

Indoor Air Quality - CRI Green Label Plus™ GLP3237, Carpet Category 5Y
GLP3210, Carpet Category 6Y

技术指标

结构 - 簇绒织造圈绒结构

产品尺寸 - 50厘米 X 50厘米 (19.7 X 19.7英寸)

表层纤维 - 100% 美利肯认证尼龙

染色技术 - Millitron® 电脑数码针染

标准底垫 - 不含PVC之 WellBAC™ Comfort 舒适软底
不含PVC之 WellBAC™ Function 弹性底背
可选装 TractionBack® 免胶

额定总厚度 - 8.5 毫米 平均
5.8 毫米 平均

抗污/防污/去污 - StainSmart®

阻燃性 - ≥ 0.45 (一级)

外观保持等级 (TARR) - 重度商业使用
频繁商业使用

室内空气质量 CRI Green Label Plus™ - GLP3237, 地毯类别 5Y
GLP3210, 地毯类别 6Y

Installation Method

安装方式:



Monolithic
同一方向安装

TractionBack®

Simplify your modular installation with Milliken's patented TractionBack®, an innovative backing system that is faster, more cost efficient, and environmentally superior to wet adhesives and peel-and-stick carpet tile.

www.millikencarpet.com



Declare.

China
North & North West &
South West Of China
T +86 10 6465 1206
T +86 133 0101 8460
South of China &
HK & Macau
T +86 181 1743 0032
East & Central of China
T +86 21 6145 1758

India
Bangalore
T +91 98408 98963
Delhi
T +91 95010 11800
Hyderabad
T +91 99631 64059
Mumbai
T +91 98926 00362

Rest of Asia
Manila
T +63 915 816 7127
Seoul
T +82 2 3783 0747
Singapore
T +65 6593 1301
Tokyo
T +81 3 5203 8406
Jakarta
T +6221 2960 7222