

INTERACTIVE ELEMENTS

This document contains interactive elements. Certain sections have enhanced interactivity and links to more information.

Watch for these icons:



CORNERSTONE

The Cornerstone collection explores the properties of different stone textures in 4 patterns: Elements, Keystone, Pavement and Fundament. Colored in beautiful natural stone colors, the collection is suitable for any given interior environment.





Cornerstone Collection - A modern expression of natural elegance

Cornerstone Collection boasts a selection of four distinct patterned textures: Elements, Key Stone, Pavement, and Fundament. These designs seamlessly complement one another, that integrate effortlessly to generate a cohesive and unified ambiance.

Toggle Pattern



Cornerstone Collection - A modern expression of natural elegance

Cornerstone Collection boasts a selection of four distinct patterned textures: Elements, Key Stone, Pavement, and Fundament. These designs seamlessly complement one another, that integrate effortlessly to generate a cohesive and unified ambiance.

Toggle Pattern



Cornerstone Collection - A modern expression of natural elegance

Cornerstone Collection boasts a selection of four distinct patterned textures: Elements, Key Stone, Pavement, and Fundament. These designs seamlessly complement one another, that integrate effortlessly to generate a cohesive and unified ambiance.

Toggle Pattern



Cornerstone Collection - A modern expression of natural elegance

Cornerstone Collection boasts a selection of four distinct patterned textures: Elements, Key Stone, Pavement, and Fundament. These designs seamlessly complement one another, that integrate effortlessly to generate a cohesive and unified ambiance.

Toggle Pattern

COLORLINE

	<i>Pearl</i>	<i>Earth</i>	<i>Gravel</i>	<i>Root</i>	<i>Granite</i>	<i>Fossil</i>	<i>Limestone</i>
Elements	 ELM144-6	 ELM271-94	 ELM144-174	 ELM180-234	 ELM153-174	 ELM6-133	 ELM140-133
Key Stone	 KST144-6	 KST271-94	 KST144-174	 KST180-234	 KST153-174	 KST6-133	 KST140-133
Pavement	 PAV144-6	 PAV271-94	 PAV144-174	 PAV180-234	 PAV153-174	 PAV6-133	 PAV140-133
Fundament	 FDM144-6	 FDM271-94	 FDM144-174	 FDM180-234	 FDM153-174	 FDM6-133	 FDM140-133

ROOM SCENES



CORNERSTONE

Elements



ELM144-6 Pearl

Elements in Pearl, monolithic installation

CORNERSTONE
Elements



ELM144-6 Pearl

Elements in Pearl, monolithic installation



CORNERSTONE
Elements



Pavement
PAV144-174 Gravel

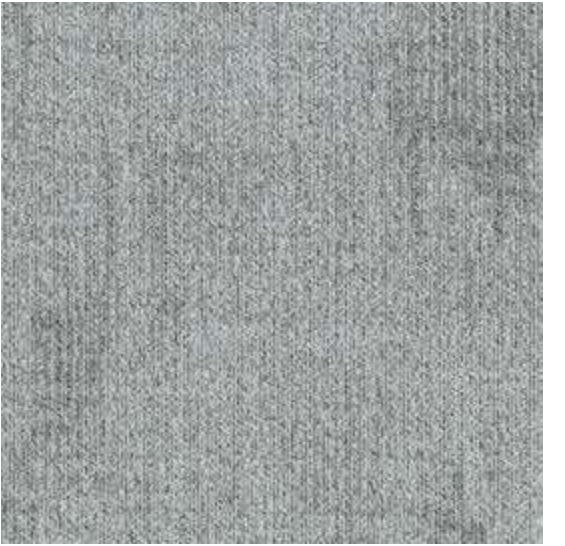


ELM144-174 Gravel

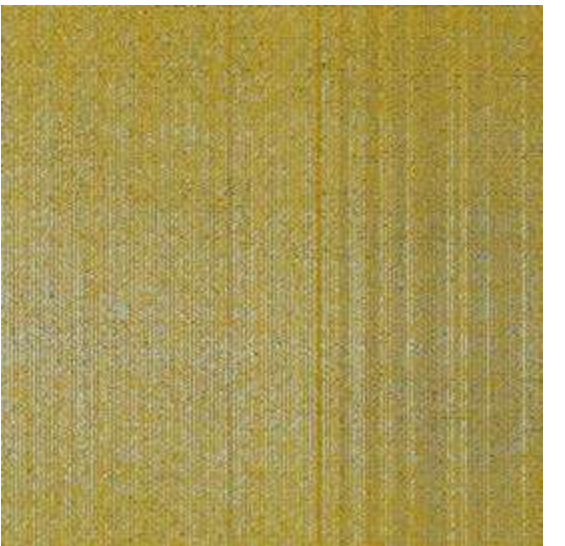
(from left to right) Pavement in Gravel,
Elemnets in Gravel, monolithic installation



CORNERSTONE
Elements



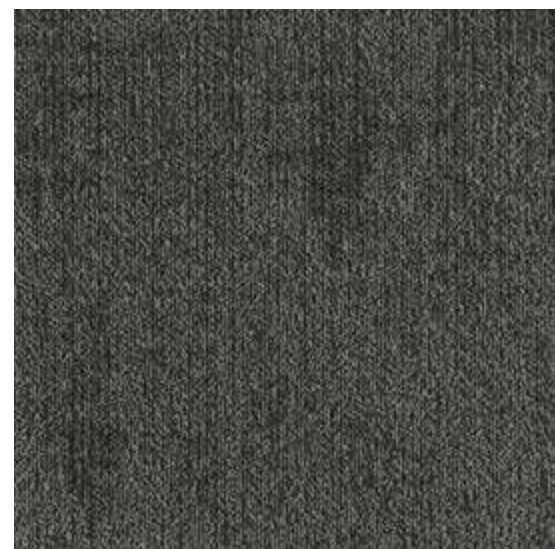
ELM180-234 Root



HUES 2.0
SAT13-144-188 Sun

(field) HUES 2.0, Saturates in Sun,
(border) Elements in Root, monolithic installation

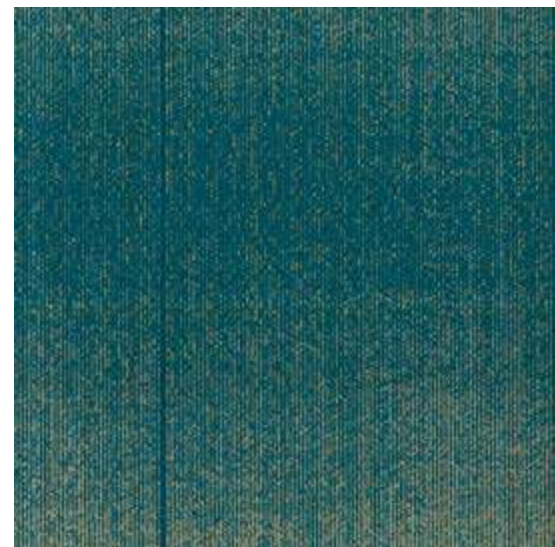
CORNERSTONE
Elements



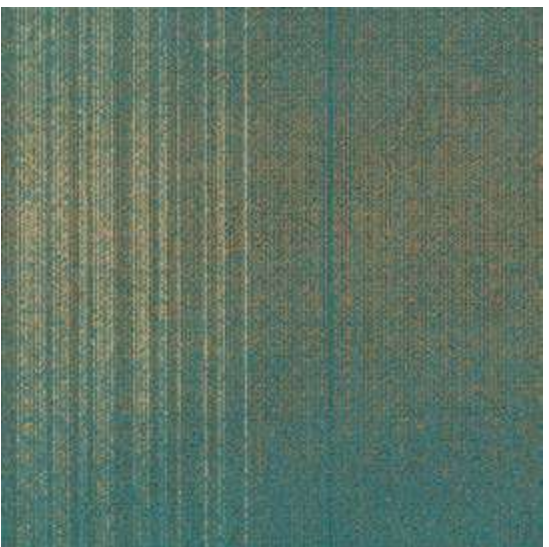
ELM6-133 Fossil



ELM271-94 Earth



HUES 2.0
SAT251-271-197 Lagoon



HUES 2.0
SAT44-207-200 Lake

(corridor) Elements in Fossil, Elements in Earth, coordinated with HUES 2.0, Saturates in Lagoon and Lake, custom installation



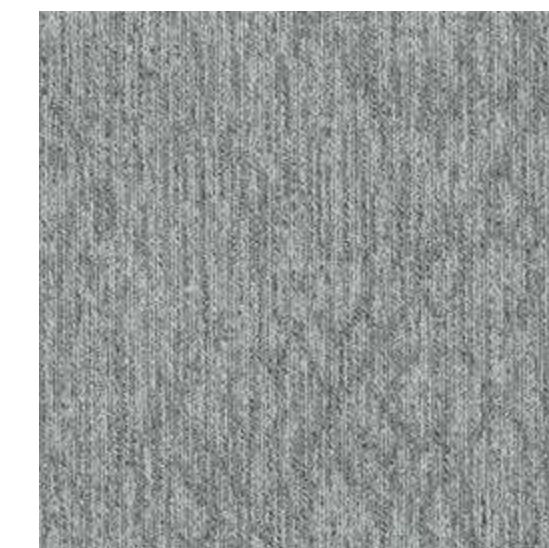
CORNERSTONE
KEY STONE



KST271-94 Earth

Key Stone in Earth, monolithic installation

CORNERSTONE
KEY STONE



KST180-234 Root

Key Stone in Root, monolithic installation

CORNERSTONE
KEY STONE



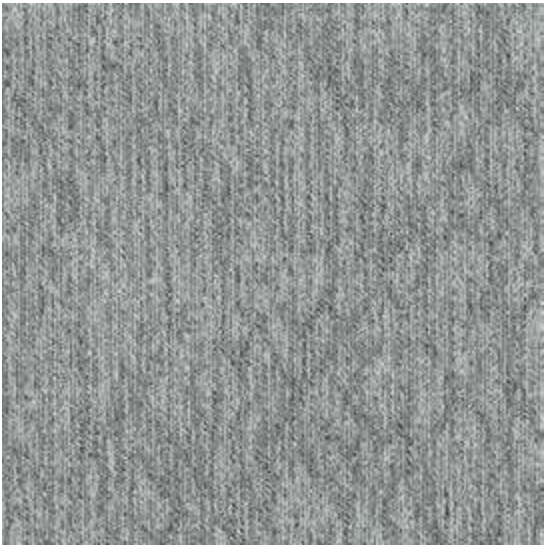
KST271-94 Earth



Key Stone in Earth, monolithic installation



CORNERSTONE
KEY STONE



KST180-234 Root



Fundament
FDM180-234 Root

(left) Key Stone in Root,
(right) Fundament in Root, monolithic installation

CORNERSTONE
KEY STONE



KST140-133 Limestone



Key Stone in Limestone, monolithic installation

CORNERSTONE
PAVEMENT



PAV271 -94 Earth



Pavement in Pearl, monolithic installation



CORNERSTONE
PAVEMENT



PAV144-6 Pearl

CORNERSTONE
PAVEMENT



PAV153-174 Granite

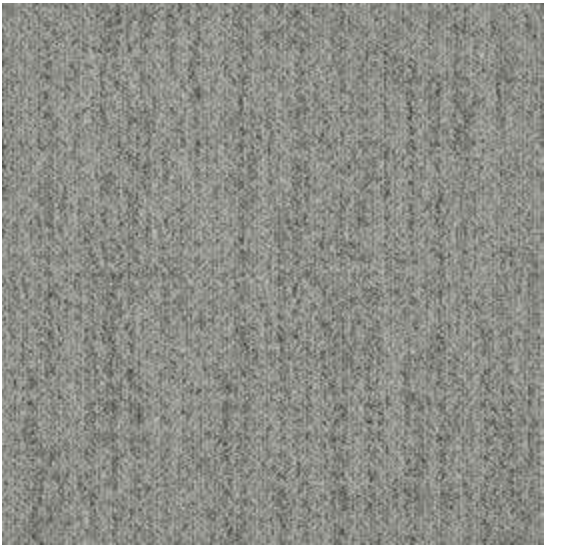
Pavement in Granite, monolithic installation



Pavement in Gravel, monolithic installation



**CORNERSTONE
PAVEMENT**

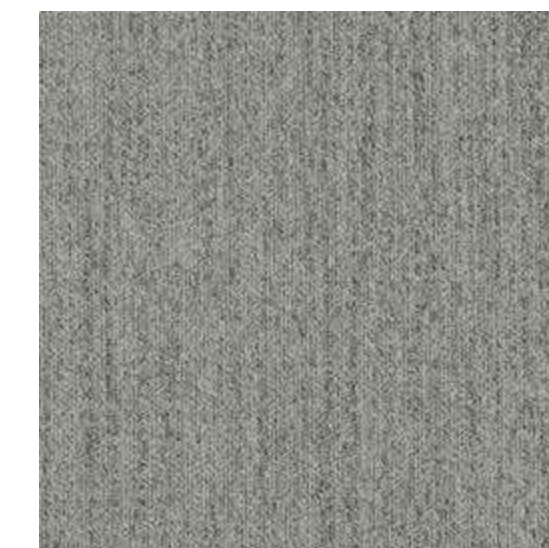


PAV144-174 Gravel



(from left to right) Pavement in Gravel,
Elements in Gravel, monolithic installation

CORNERSTONE PAVEMENT

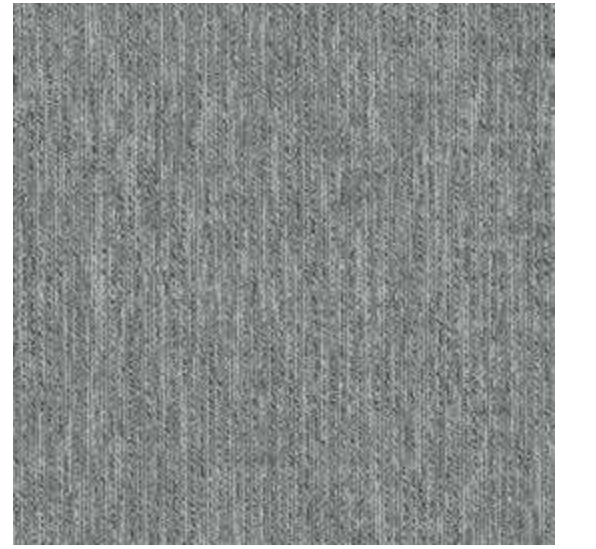


PAV144-174 Gravel



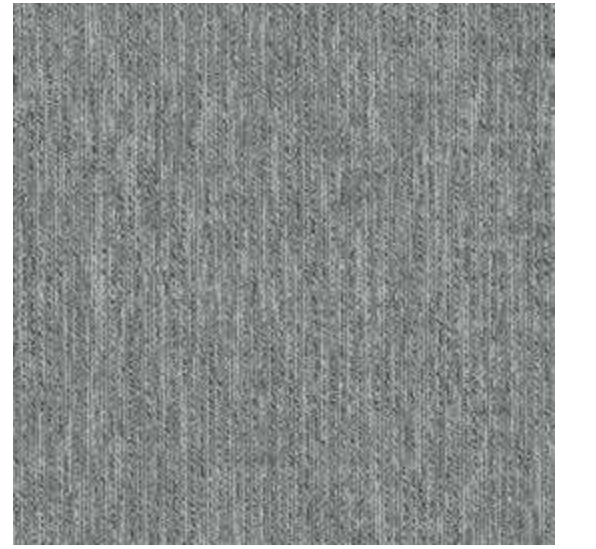
Elements
ELM144-174 Gravel

CORNERSTONE
FUNDAMENT



FDM180-234 Root

CORNERSTONE
FUNDAMENT

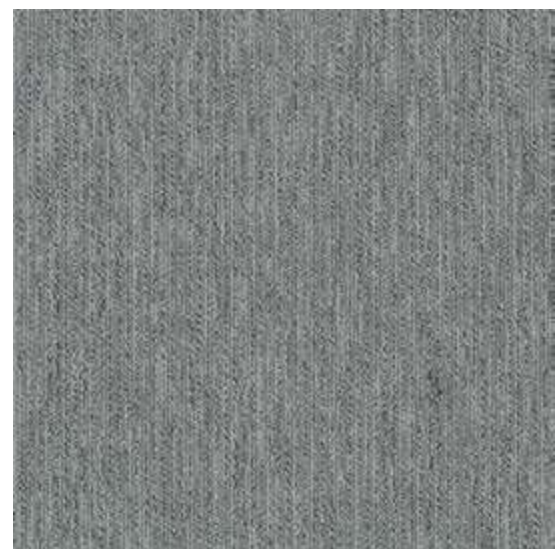


FDM180-234 Root

Fundament in Root, monolithic installation



CORNERSTONE
FUNDAMENT



FDM153-174 Granite

Fundament in Granite, monolithic installation

CORNERSTONE
FUNDAMENT



Pavement
PAV140-133 Limestone



FDM144-174 Gravel

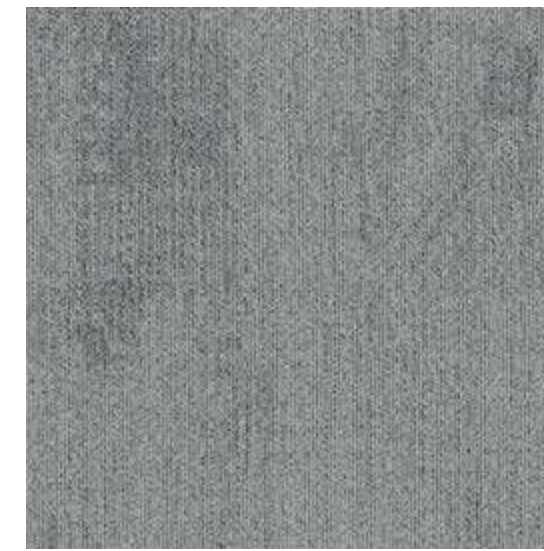


(from left to right) Pavement in Limestone,
Fundament in Gravel, monolithic installation



(from front to back) Fundament in Limestone, Pavement in Granite, Key Stone in Limestone, Elements in Granite, custom installation

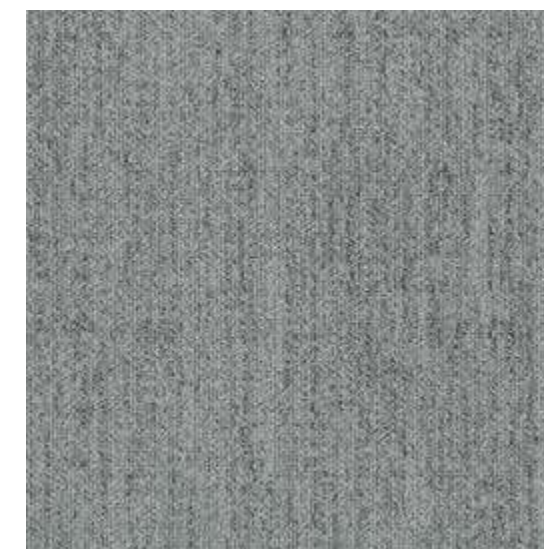
CORNERSTONE FUNDAMENT



Elements
ELM153-174 Granite



Key Stone
KST140-133 Limestone

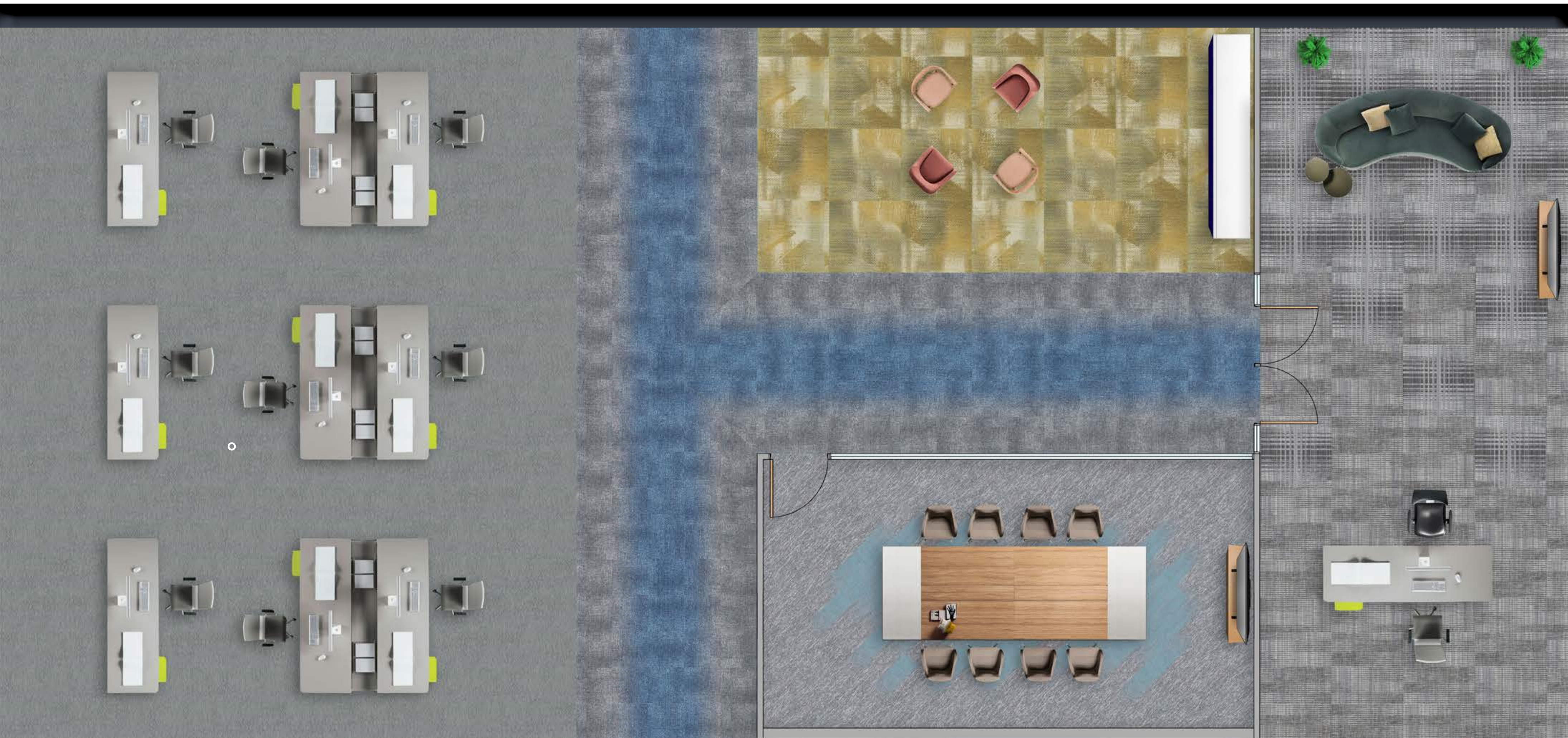


Pavement
PAV153-174 Granite



Fundament
FDM140-133 Limestone

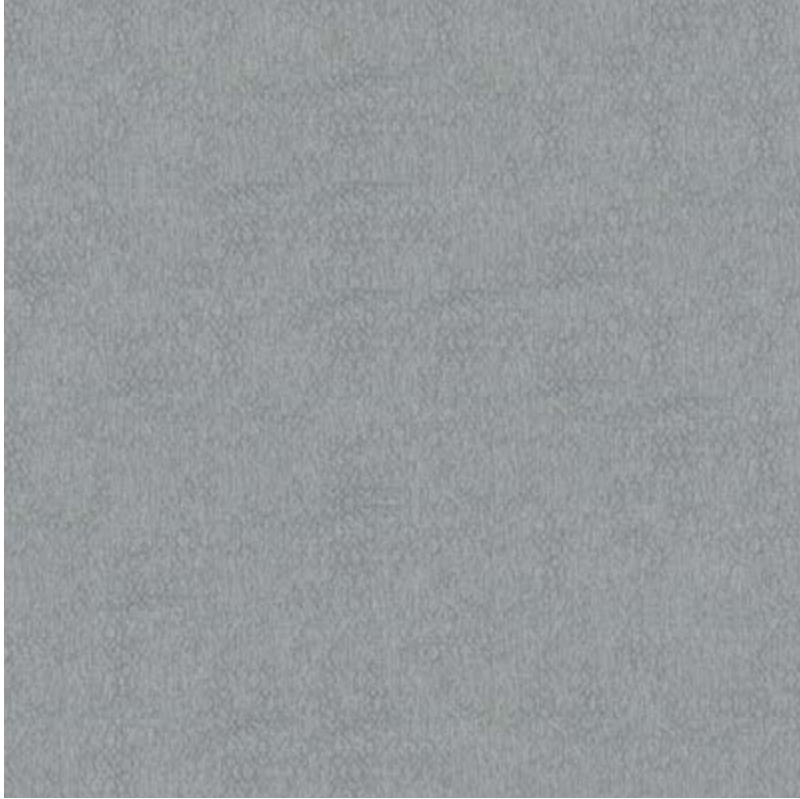
COORDINATION



 *Click on the icons for detailed view.*



Workstation



CORNERSTONE
Key Stone in Granite,
monolithic installation





Corridor



COASTLINE

Seascape in Rockpool/Cool Wave,
Cool Wave and Rockpool,
monolithic installation





Collaboration Area



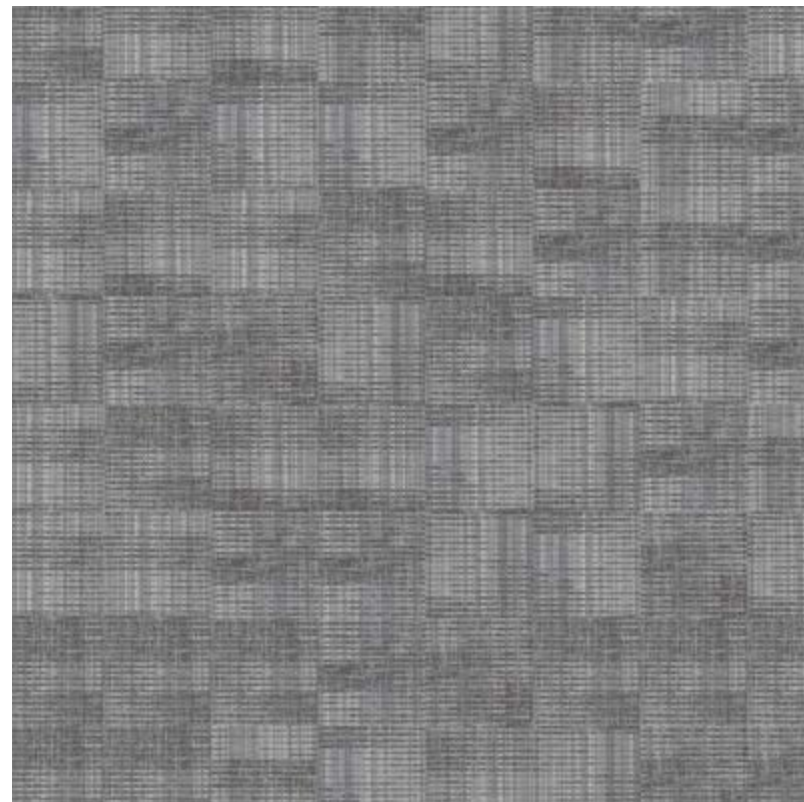
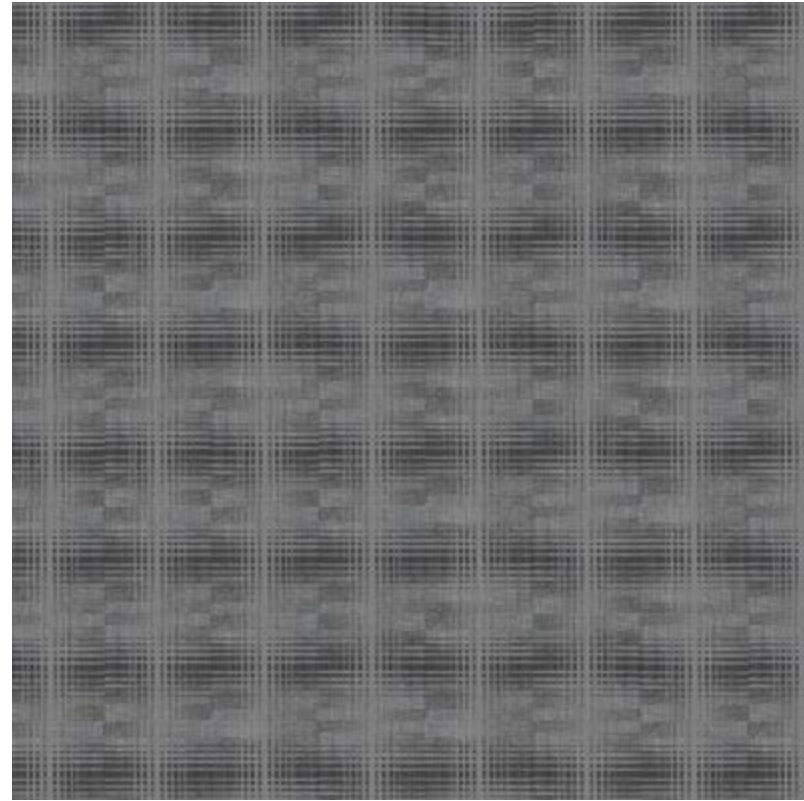
DIVIDED GLASS

Glimmer in Moon Glimmer,
monolithic installation





Executive Room



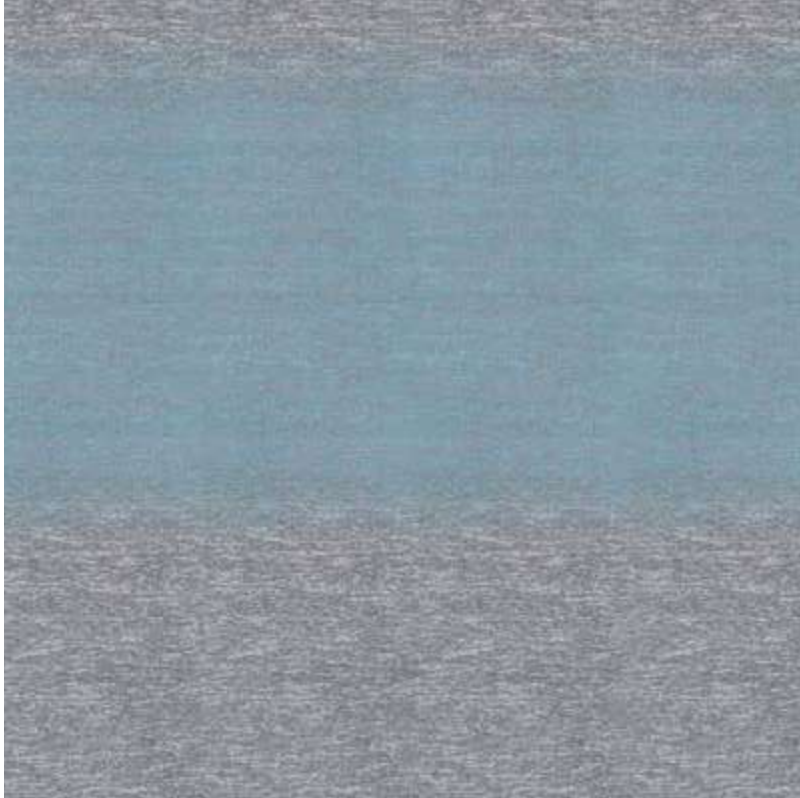
MOMENTUM 2.0

Quantum in Energy,
Dimensions in Relations,
monolithic installation





Meeting Room



BOUNDIRES

Center Accent in Sky, Center Neutral in Med Grey, West in Mid Gray with Sky, East in Mid Gray with Sky, monolithic installation



COORDINATION



 *Click on the icons for detailed view.*



Workstation



CORNERSTONE
Elements in Gravel,
monolithic installation





Corridor



NATURE SUPPLY
Forest Sounds in Dew and Wild Fern,
ashlar installation





Collaboration Area



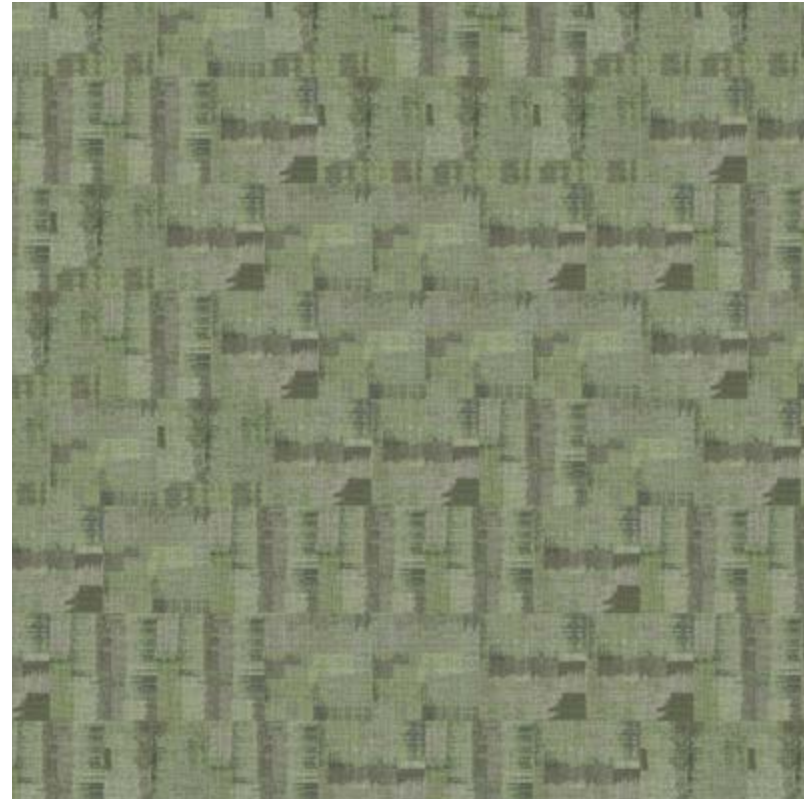
PASSAGE

Visible Light in Neutral Sun,
monolithic installation





Executive Room



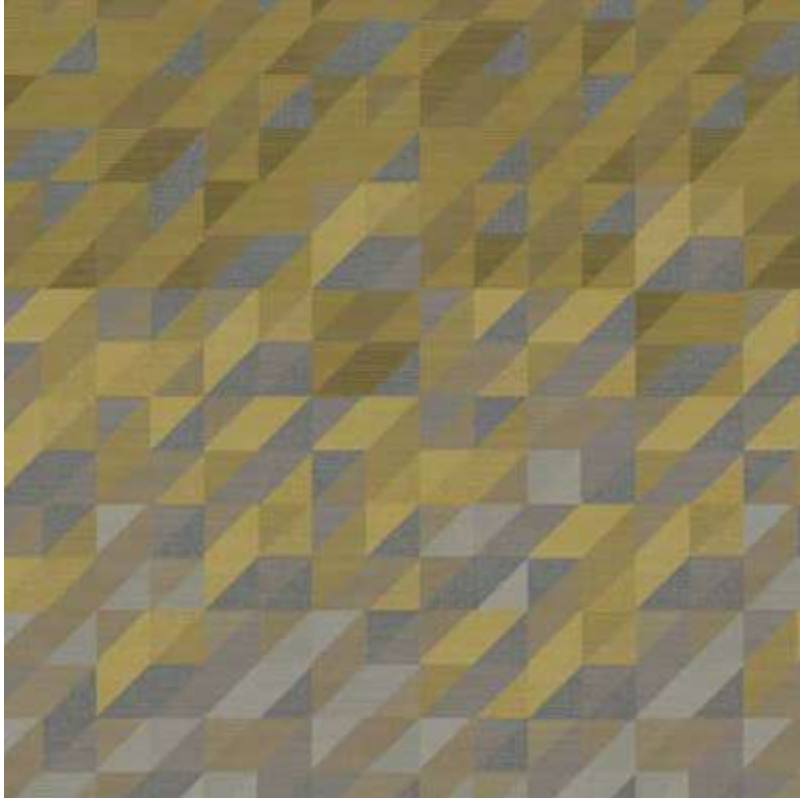
DISSIDENT & FRINGE

Dissident in City State,
Fringe in Bridge FRG,
monolithic installation





Meeting Room



PLAYANGLE

Plus in Light Ray A, B and C,
monolithic installation



CORNERSTONE

Construction - Tufted, Textured Loop

Tile Size - 50cm X 50 cm

Face Fiber - 100% Milliken Certified Nylon

Dye Method - Solution Dyed

Standard Backing - PVC-Free WellBAC™ Function
Available with TractionBack®

Nominal Total Thickness - 5.7 mm AVG.

Flammability - ≥ 0.45 (Class I)

Texture Appearance Retention Rating (TARR) - Heavy

Indoor Air Quality - CRI Green Label Plus™ - GLP3200, Carpet Category 14X

结构 - 簇绒织造圈绒结构

产品尺寸 - 50 厘米 X 50 厘米

表层纤维 - 100% 美利肯认证尼龙

染色技术 - 原液染色

标准底垫 - 不含 PVC 之 WellBAC™ Function 弹性底背
可选装 TractionBack® 免胶

额定总厚度 - 5.7 毫米 平均

阻燃性 - ≥ 0.45 (一级)

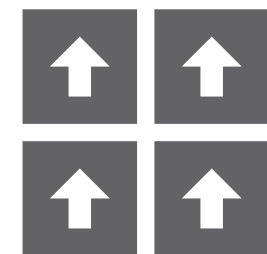
外观保持等级 (TARR) - 频繁商业使用

室内空气质量 CRI Green Label Plus™ - GLP3200, 地毯类别 14X

TractionBack®

Simplify your modular installation with Milliken's patented TractionBack®, an innovative backing system that is faster, more cost efficient, and environmentally superior to wet adhesives and peel-and-stick carpet tile.

Recommended Installation Method



Monolithic
同一方向安装



(left) Elements in Fossil, (right) HUES 2.0, Saturates in Lagoon, custom installation

M/PACT™

CARBON NEUTRAL PROGRAM

CORNERSTONE IS A CARBON NEUTRAL COLLECTION

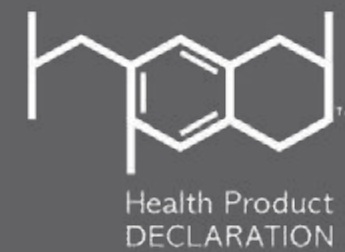
Climate change is one of the greatest threats facing humanity. Today, our carpet, LVT and entryway tiles are carbon neutral everywhere in the world. We invite you to learn more about the significant changes we've made, then let's work together to design a better future.



CORNERSTONE



Declare.



Milliken

© 2023 Milliken & Company | Design © Milliken & Company

Images in this brochure are approximate for color and pattern scale. Please use actual samples to make your final selections.