

Vibration

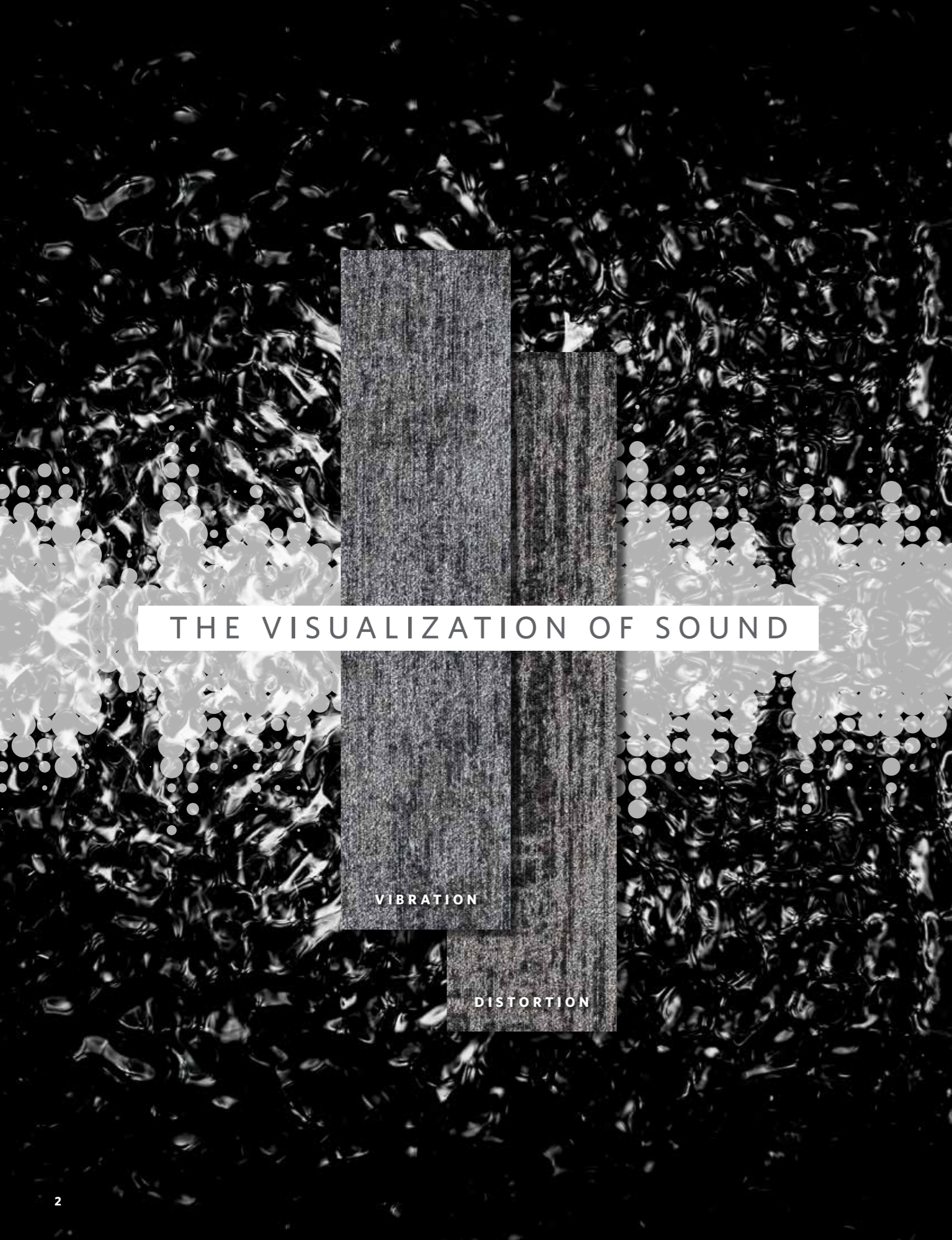


Distortion

 **MAJOR  
FREQUENCY:  
ONE**

Vibration / Distortion

*Milliken*<sup>®</sup>



# THE VISUALIZATION OF SOUND

VIBRATION

DISTORTION



Distortion in Tremor DTN209-118. 25cm x 1m planks. Vertical ashlar.

Sound can beckon to the core of our emotions. What begins as a singular wave can multiply and curiously sync together, eventually inciting a poignant experience within each of us.

Introducing Major Frequency: One, the first wave in a series of inspiration rooted in the realization of sound's power. Through two organic patterns expressed in 13 unhindered color options, this collection explores the possibilities that exist within raw and unencumbered cymatics.

## MAJOR FREQUENCY: ONE

## VIBRATION

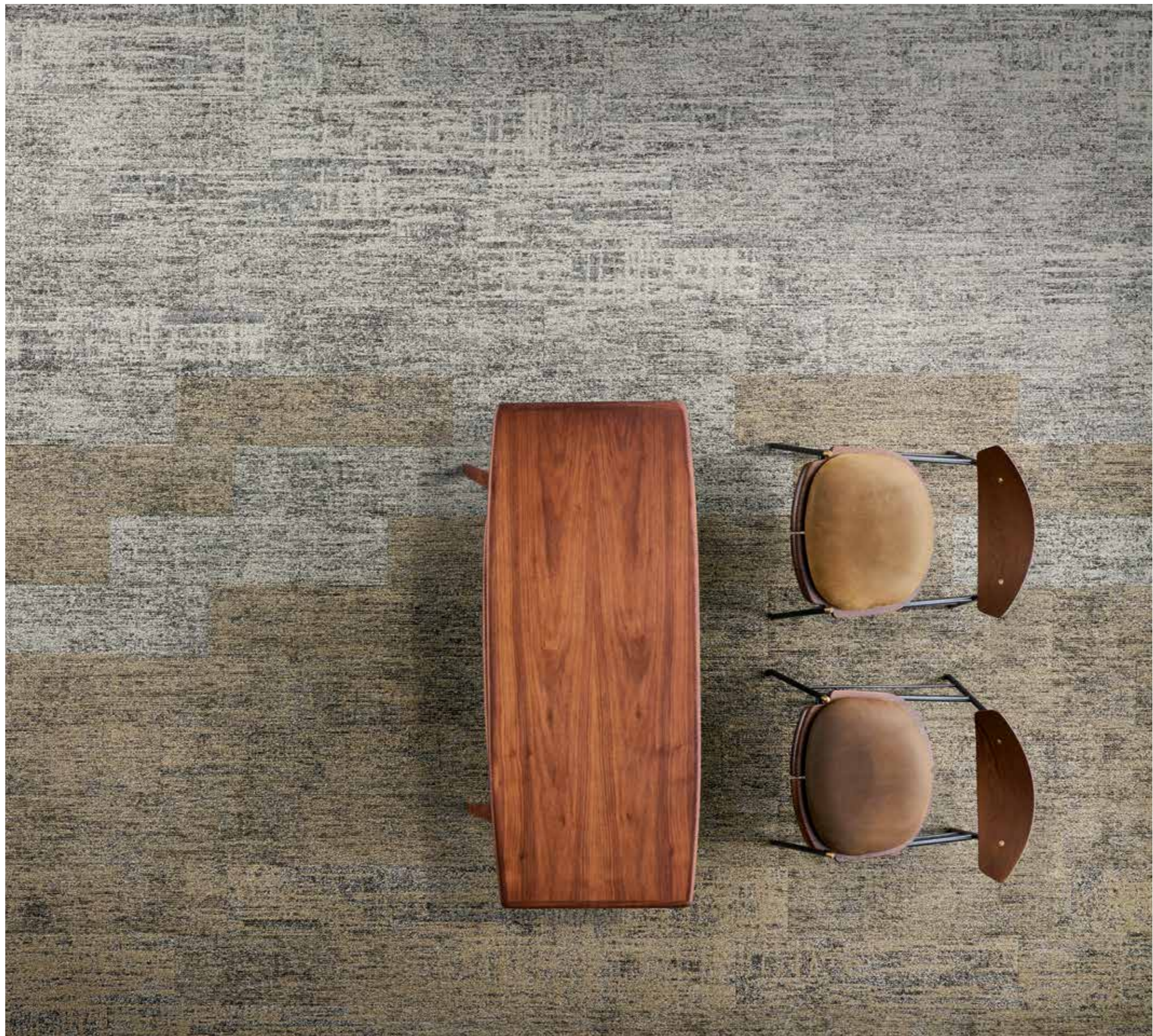
Stippled and robust, Vibration harnesses a finer, more saturated vitality.

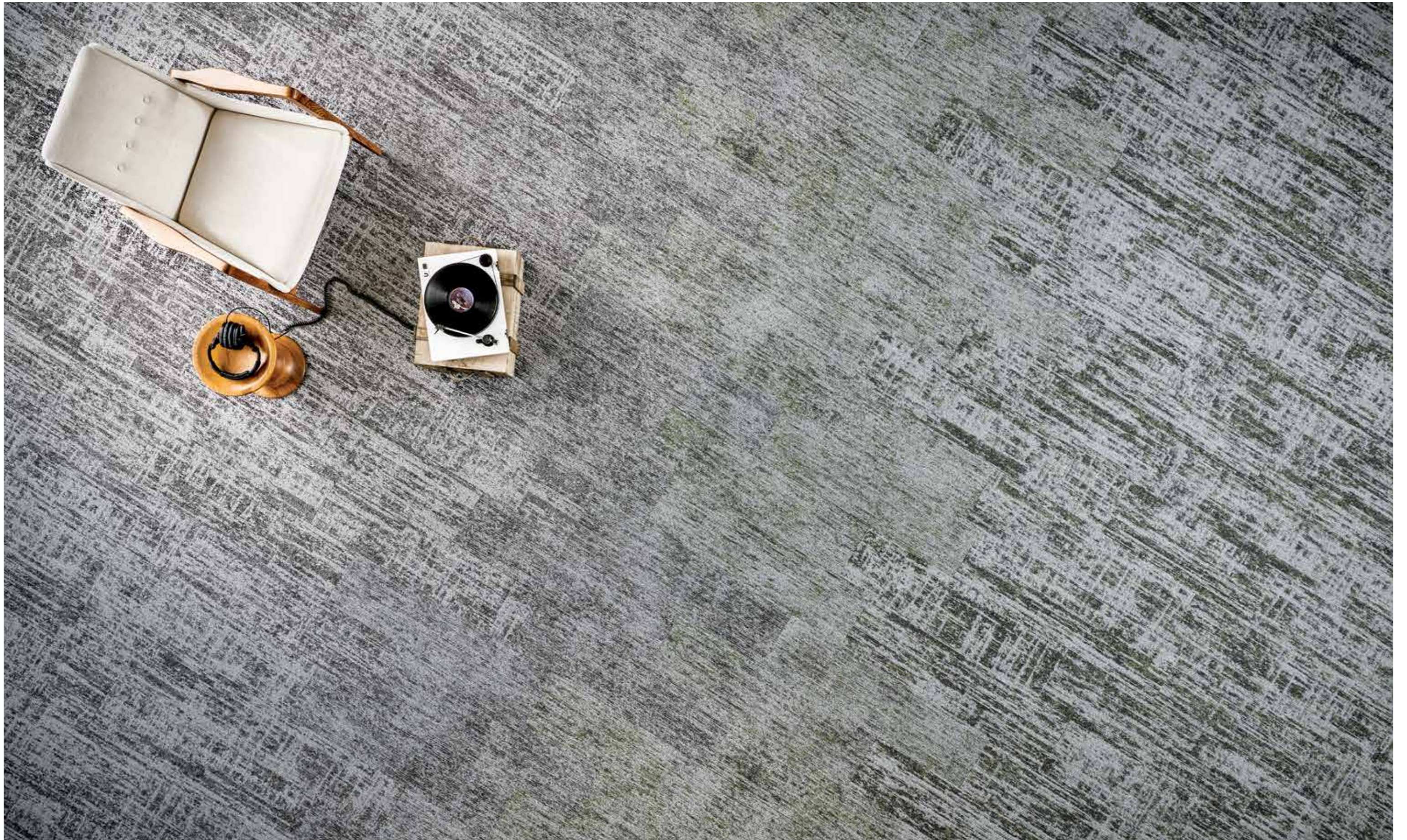


## DISTORTION

A second perspective, Distortion expresses a slightly larger, yet more diluted flow within positive and negative space.



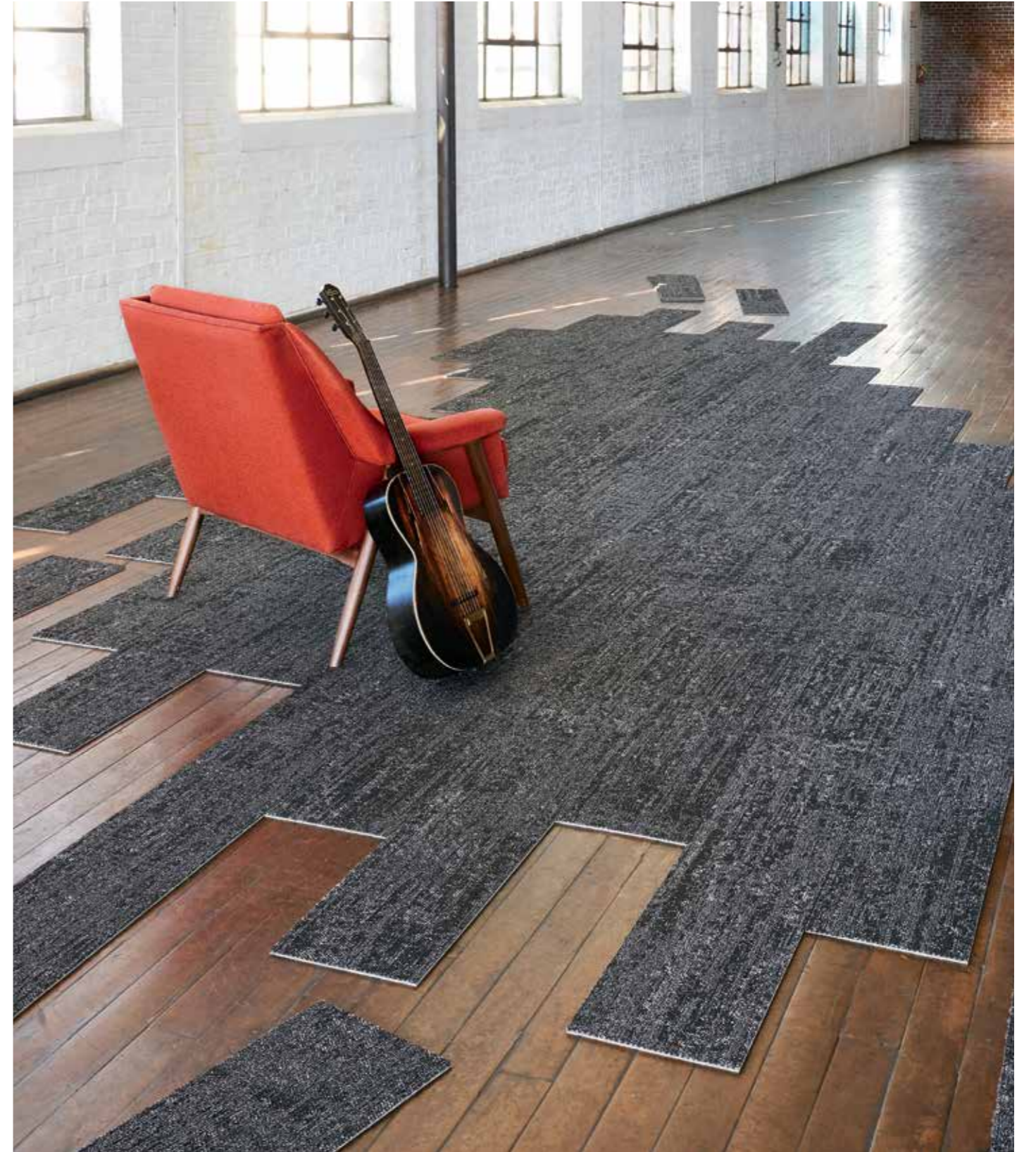




(Left to right) Distortion in Tremor DTN209-118. Vibration in Tremor VBN209-118. Vibration in Rustle VBN141-79-209. Distortion in Rustle DTN141-79-209. 25cm x 1m planks. Vertical ashlar.

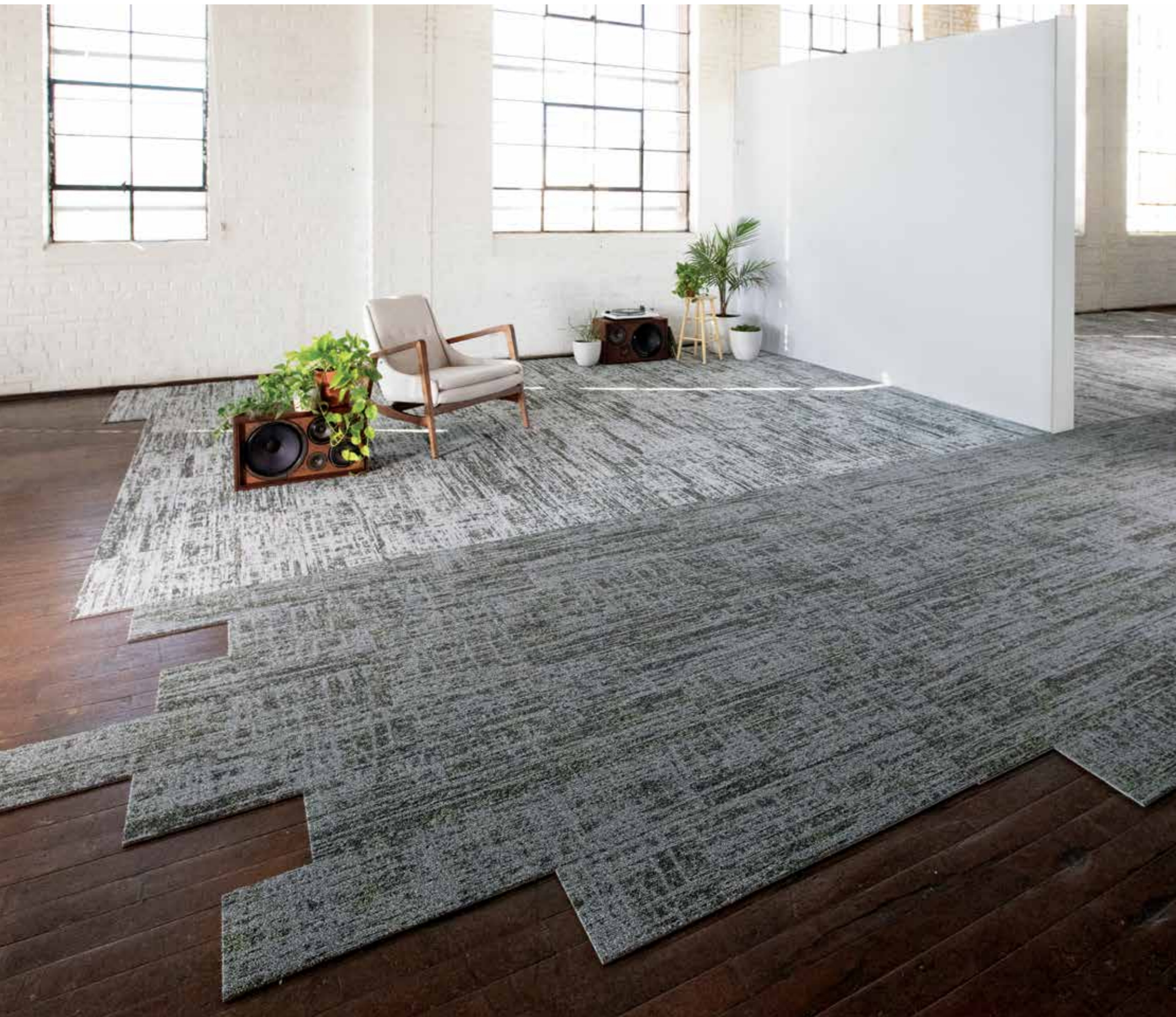


FIND THE HUE THAT MOVES YOU.  
Visualize now at [MillikenFloors.com](https://www.millikenfloors.com)















COLOR LINE IN VIBRATION



VBN218-106  
PERCEIVE



VBN209-118  
TREMOR



VBN94-27-217  
BUZZ



VBN183-118-152  
INTERFERENCE



VBN94-211-212  
CRESCENDO



VBN79-152  
STRIDENT



VBN27-118  
STATIC



VBN141-118-106  
QUAKE



VBN211-27-217  
OVERTONE



VBN27-152  
FLUX



VBN60-79-27  
RUCKUS



VBN190-79-152  
CLAMOR



(These images are only for color reference)

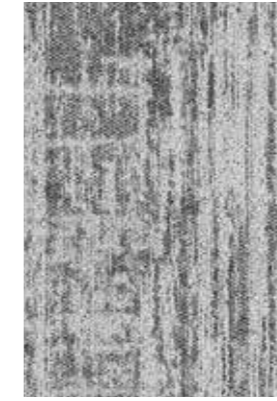


VBN141-79-209  
RUSTLE

COLOR LINE IN DISTORTION



DTN218-106  
PERCEIVE



DTN209-118  
TREMOR



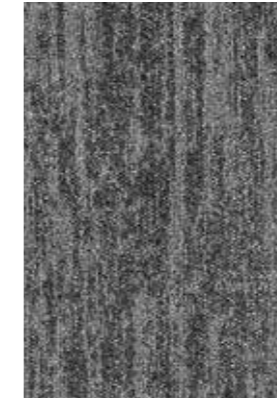
DTN94-27-217  
BUZZ



DTN183-118-152  
INTERFERENCE



DTN94-211-212  
CRESCENDO



DTN79-152  
STRIDENT



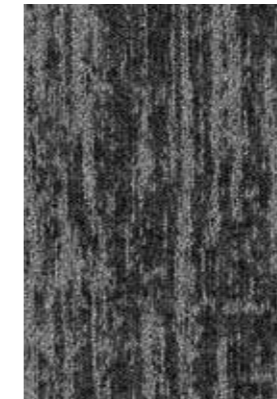
DTN27-118  
STATIC



DTN141-118-106  
QUAKE



DTN211-27-217  
OVERTONE



DTN27-152  
FLUX



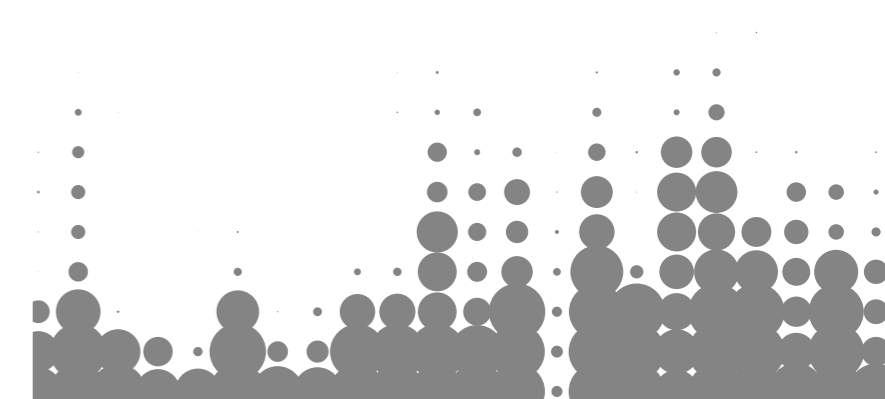
DTN60-79-27  
RUCKUS



DTN190-79-152  
CLAMOR



DTN141-79-209  
RUSTLE



(These images are only for color reference)

# STYLE BACKED BY PERFORMANCE

Milliken Floor Covering offers products and expertise in all areas of your commercial spaces, including high-performance entryway systems, modular and broadloom carpet, luxury vinyl tile and milliCare®. Simplify your flooring projects by working with a trusted partner that lets you focus on enjoying the process of creating a great space.





# MULTI-TILE DESIGNS

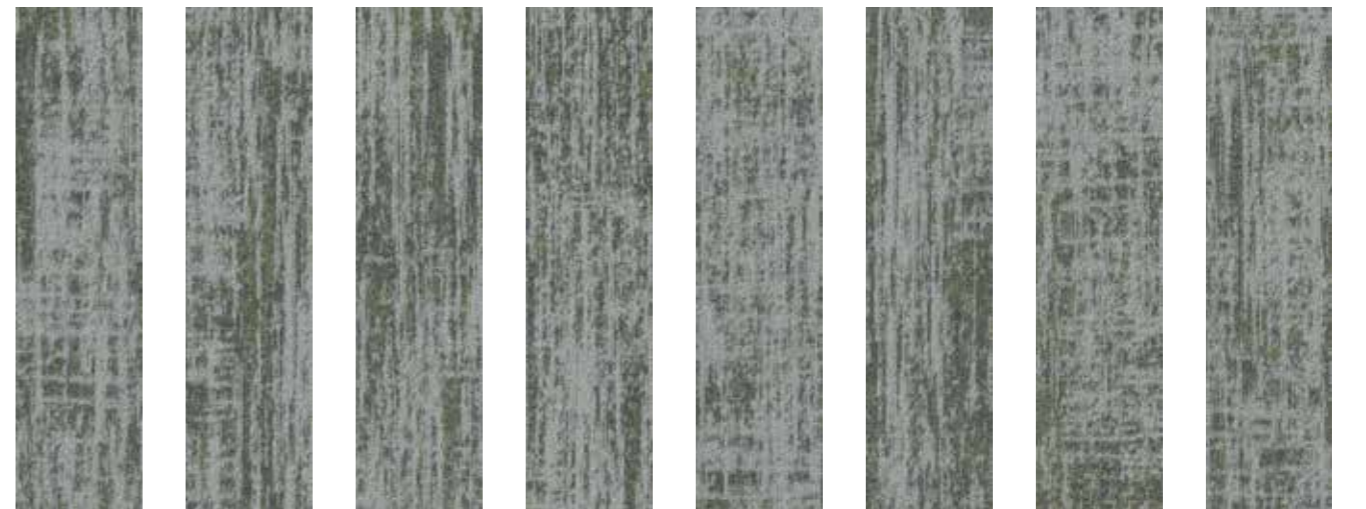
The Major Frequency: One designs are multi-tile designs.  
Orders will ship as a randomised assortment of all elements.

## Vibration



**VBN141-79-209**  
RUSTLE

## Distortion



**DTN141-79-209**  
RUSTLE





## Major Frequency: One

Vibration / Distortion

### SPECIFICATION

**Construction** - Tufted, Textured Loop

**Tile Size** - 25cm X 100cm

**Face Fiber** - 100% Milliken Certified Nylon

**Dye Method** - Solution Dyed

**Standard Backing** - PVC-Free WellBAC™ Comfort  
Available with TractionBack®

**Nominal Total Thickness** - 8.4 mm AVG.(Vibration)  
8.6 mm AVG.(Distortion)

**Flammability** - ≥ 0.45 (Class I)

**Texture Appearance Retention Rating (TARR)** - Severe

**Indoor Air Quality - CRI Green Label Plus™**

GLP100130, Carpet Category 13X

### 技术指标

**结构** - 簇绒织造圈绒结构

**产品尺寸** - 25厘米 X 100厘米

**表层纤维** - 100% 美利肯认证尼龙

**染色技术** - 原液染色

**标准底垫** - 不含PVC之 WellBAC™ Comfort舒适软底  
可选装TractionBack® 免胶

**额定总厚度** - 8.4 毫米 平均(Vibration)  
8.6 毫米 平均(Distortion)

**阻燃性** - ≥ 0.45 (一级)

**外观保持等级 (TARR)** - 重度商业使用

**室内空气质量 CRI Green Label Plus™** - GLP100130, 地毯类别 13X

### Installation Method:

安装方式



**Planks**  
板条安装

### TractionBack®

Simplify your modular installation with Milliken's patented TractionBack®, an innovative backing system that is faster, more cost efficient, and environmentally superior to wet adhesives and peel-and-stick carpet tile.

[www.millikencarpet.com](http://www.millikencarpet.com)



**Declare.**

**China**  
North & North West &  
South West Of China  
T +86 10 6465 1206  
T +86 133 0101 8460  
South of China &  
HK & Macau  
T +86 181 1743 0032  
East & Central of China  
T +86 21 6145 1758

**India**  
Bangalore  
T +91 98408 98963  
Delhi  
T +91 95010 11800  
Hyderabad  
T +91 99631 64059  
Mumbai  
T +91 98926 00362

**Rest of Asia**  
Manila  
T +63 915 816 7127  
Seoul  
T +82 2 3783 0747  
Singapore  
T +65 6593 1301  
Tokyo  
T +81 3 5203 8406  
Jakarta  
T +6221 2960 7222