



Shadowbox



Shardlines

**OUT OF THE SHADOWS 2.0**  
Shadowbox/ Shardlines



*Milliken*



**INSPIRED. INSPIRING.**

In the space of a moment's reflection, one has the chance to see below the surface - to discover new depths, untold stories, and underlying inflections.

Out of the Shadows 2.0 gives us a chance to reflect, to look more closely, if just for a second and see the once-hidden stories rise from their depths.



# SHADOWBOX



Shadowbox in Outline, monolithic installation





# SHARDLINES



Shardlines in Outline, monolithic installation



Shardlines in Shape, monolithic installation



Shadowbox and Shardlines in Opaque, monolithic installation

Shadowbox

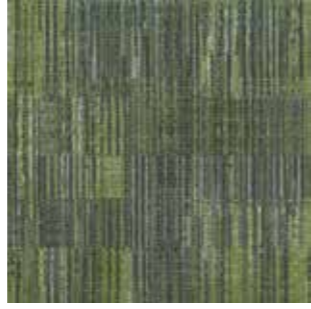


SHB153-154 HINT

Shardlines



SHL153-154 HINT



SHL118-141 TREE SHADE



Shadowbox and Shardlines in Hint, Shardlines in Tree Shade, monolithic installation





Shadowbox



SHB13-154 OUTLINE

Shardlines



SHL13-154 OUTLINE

Shardlines



SHL118-140 MOONLIGHT



Shadowbox and Shardlines in Outline, Shardlines in Moonlight, monolithic installation

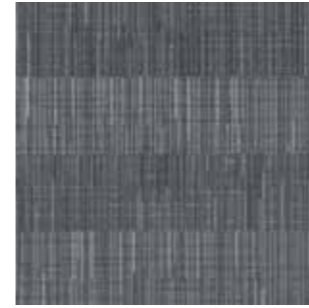


Shardlines



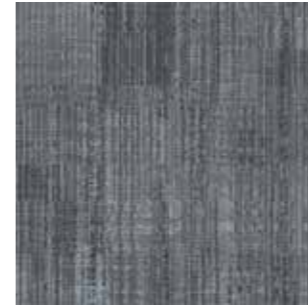
SHL218-188 CROWN

Shadowbox



SHB153-154 HINT

Shardlines



SHL153-154 HINT

Shardlines



SHL180-153 STEAM



Shardlines in Crown(left), Shadowbox and Shardlines in Hint, Shardlines in Steam(right), monolithic installation

Shadowbox

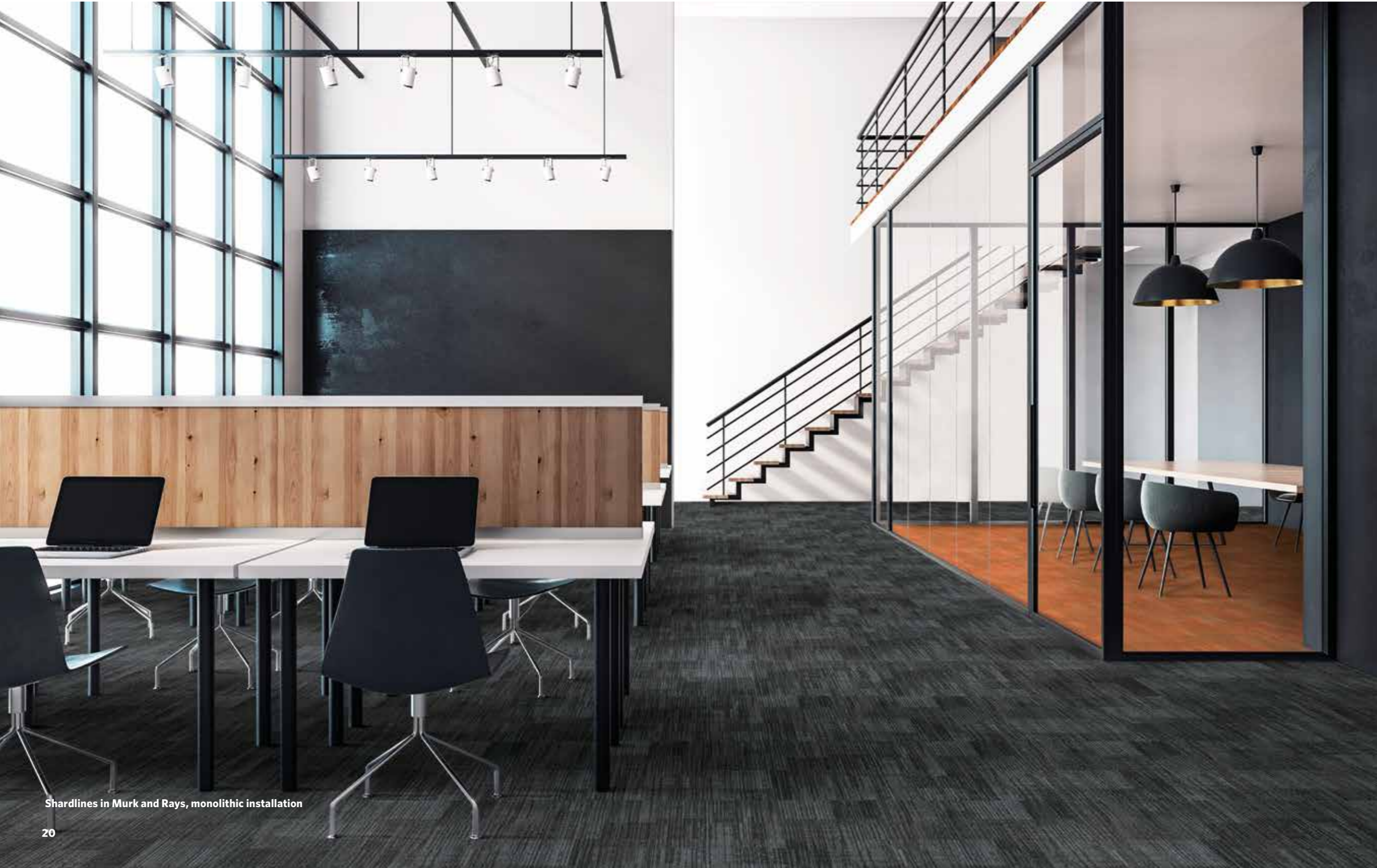


SHL154-119 MURK

Shardlines



SHL128-189 RAYS

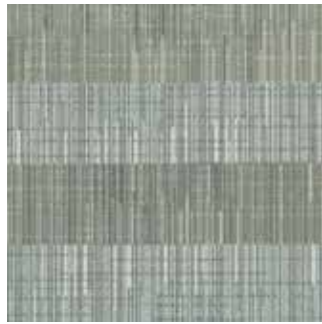


Shardlines in Murk and Rays, monolithic installation

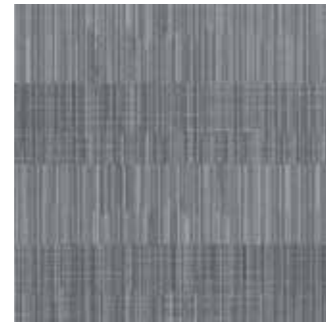


# COLORLINE

## Shadowbox



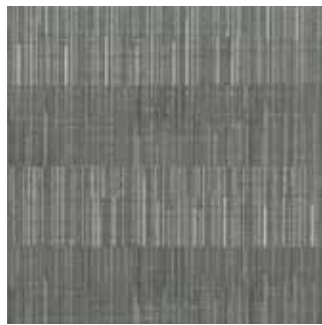
SHB209-218 OPAQUE



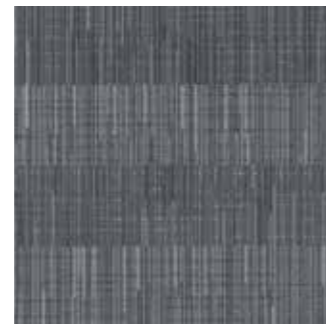
SHB180-153 STEAM



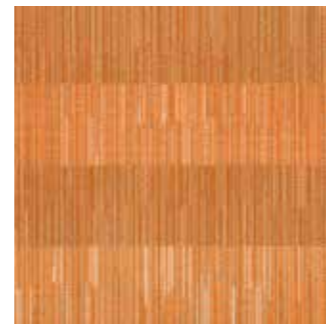
SHB218-188 CROWN



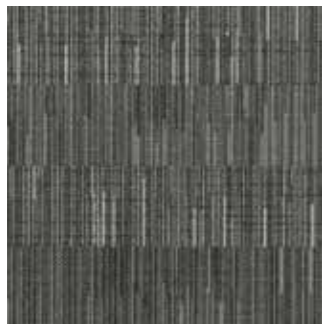
SHB225-120 SHAPE



SHB153-154 HINT



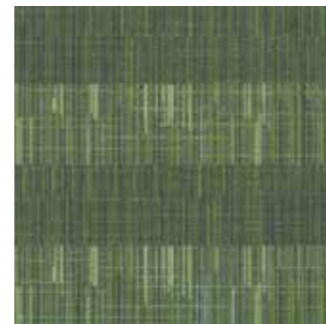
SHB128-189 RAYS



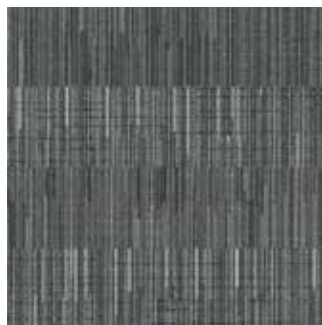
SHB165-13 PHANTOM



SHB13-154 OUTLINE



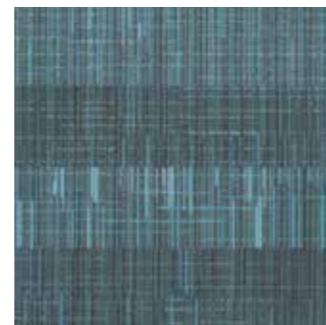
SHB118-141 TREE SHADE



SHB250-260 CONTOUR

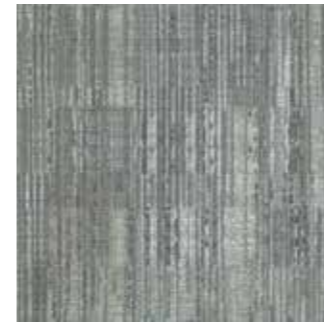


SHB154-119 MURK

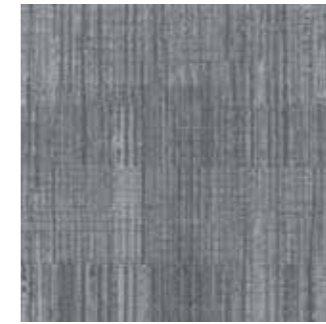


SHB118-140 MOONLIGHT

## Shardlines



SHL209-218 OPAQUE



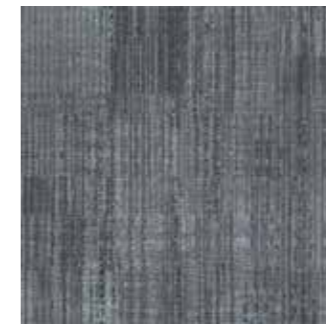
SHL180-153 STEAM



SHL218-188 CROWN



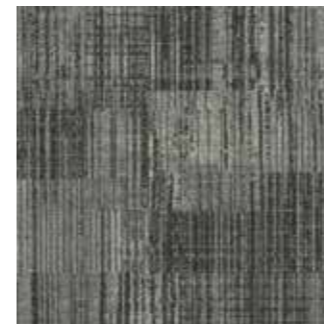
SHL225-120 SHAPE



SHL153-154 HINT



SHL128-189 RAYS



SHL165-13 PHANTOM



SHL13-154 OUTLINE



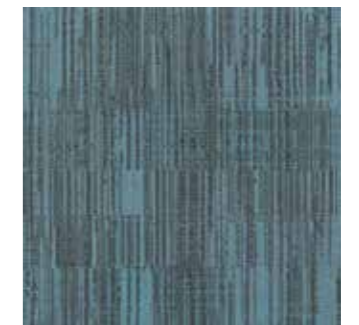
SHL118-141 TREE SHADE



SHL250-260 CONTOUR



SHL154-119 MURK



SHL118-140 MOONLIGHT



# Out of the Shadows 2.0

## Shadowbox / Shardlines

### SPECIFICATION

- Construction** - Tufted, Textured Loop
- Tile Size** - 50cm X 50cm (19.7" X 19.7")
- Face Fiber** - 100% Milliken Certified Nylon
- Dye Method** - Millitron®
- Standard Backing** - PVC-Free WellBAC™ Function  
Available with TractionBack®
- Nominal Total Thickness** - 5.8 mm AVG.
- Stain Repel/Stain Resist/Soil Release** - StainSmart®
- Flammability** - ≥ 0.45 (Class I)
- Texture Appearance Retention Rating (TARR)** - Heavy
- Indoor Air Quality - CRI Green Label Plus™**  
GLP3210, Carpet Category 6Y

### 技术指标

- 结构** - 簇绒织造圈绒结构
- 产品尺寸** - 50厘米 X 50厘米 (19.7 X 19.7英寸)
- 表层纤维** - 100% 美利肯认证尼龙
- 染色技术** - Millitron® 电脑数码针染
- 标准底垫** - 不含PVC之 WellBAC™ Function 弹性底背  
可选装 TractionBack® 免胶
- 额定总厚度** - 5.8 毫米 平均
- 抗污/防污/去污** - StainSmart®
- 阻燃性** - ≥ 0.45 (一级)
- 外观保持等级 (TARR)** - 频繁商业使用
- 室内空气质量 CRI Green Label Plus™** - GLP3210, 地毯类别 6Y

### Installation Method

安装方式:



**Monolithic**  
同一方向安装

### TractionBack®

Simplify your modular installation with Milliken's patented TractionBack®, an innovative backing system that is faster, more cost efficient, and environmentally superior to wet adhesives and peel-and-stick carpet tile.

[www.millikencarpet.com](http://www.millikencarpet.com)



**Declare.**

**China**  
North & North West &  
South West Of China  
T +86 10 6465 1206  
T +86 133 0101 8460  
South of China &  
HK & Macau  
T +86 181 1743 0032  
East & Central of China  
T +86 21 6145 1758

**India**  
Bangalore  
T +91 98408 98963  
Delhi  
T +91 95010 11800  
Hyderabad  
T +91 99631 64059  
Mumbai  
T +91 98926 00362

**Rest of Asia**  
Manila  
  
Seoul  
  
Singapore  
T +65 6593 1301  
Tokyo  
T +81 3 5203 8406  
Jakarta  
T +6221 2960 7222

