



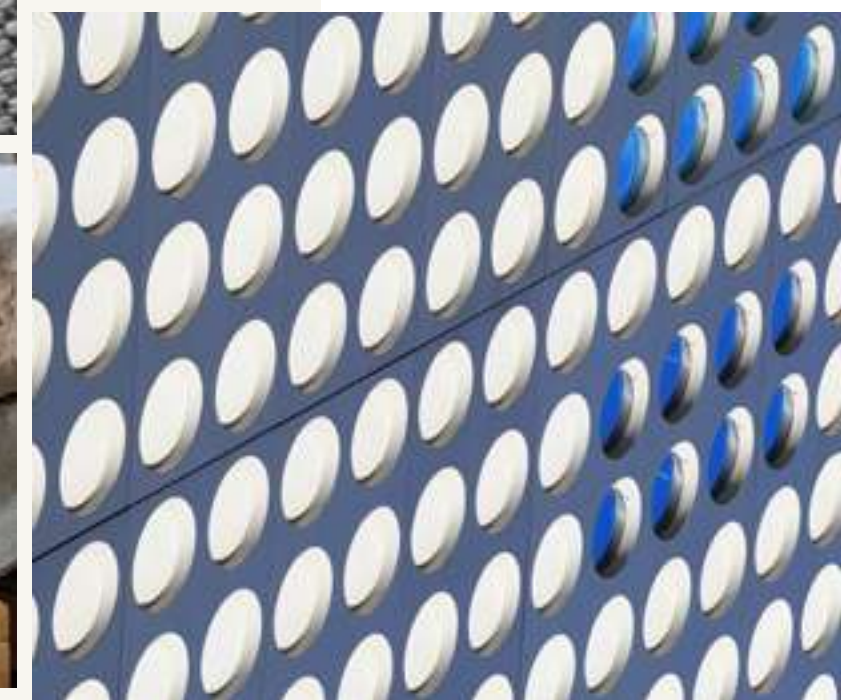
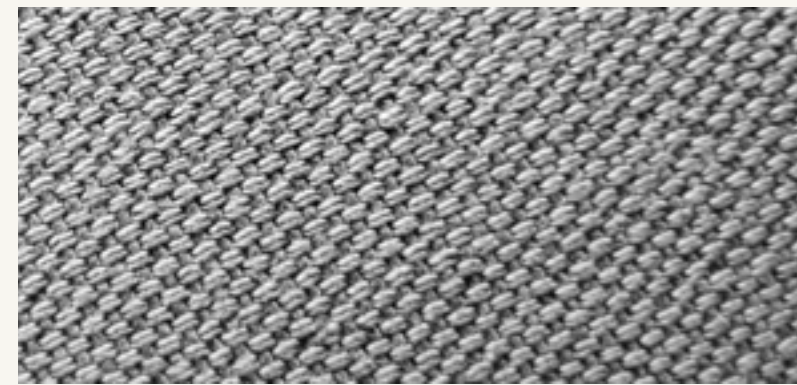
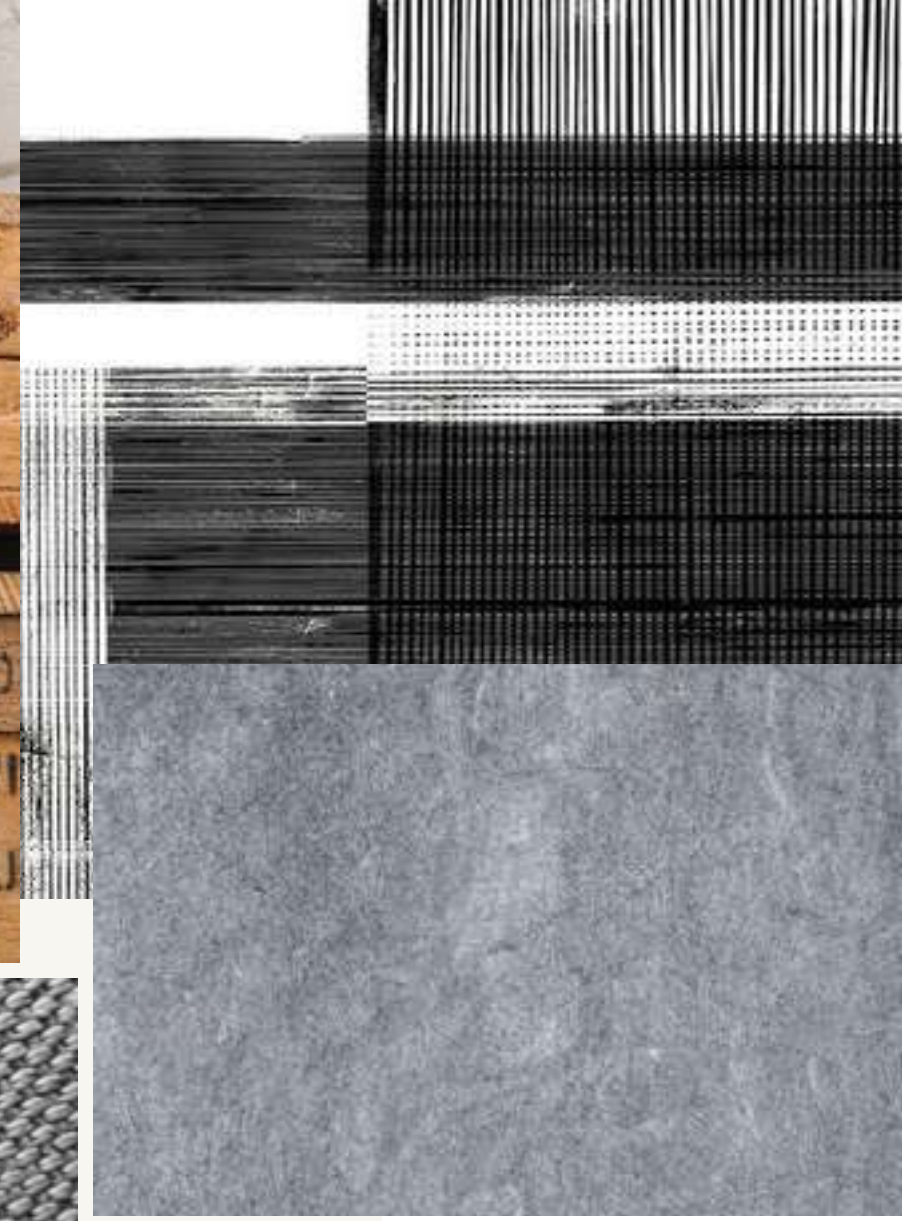
REPURPOSED MATERIALS

Eero Blueprint / Overprint / Woven Stone / Raw Wood

FlexForm™ LVT

Milliken

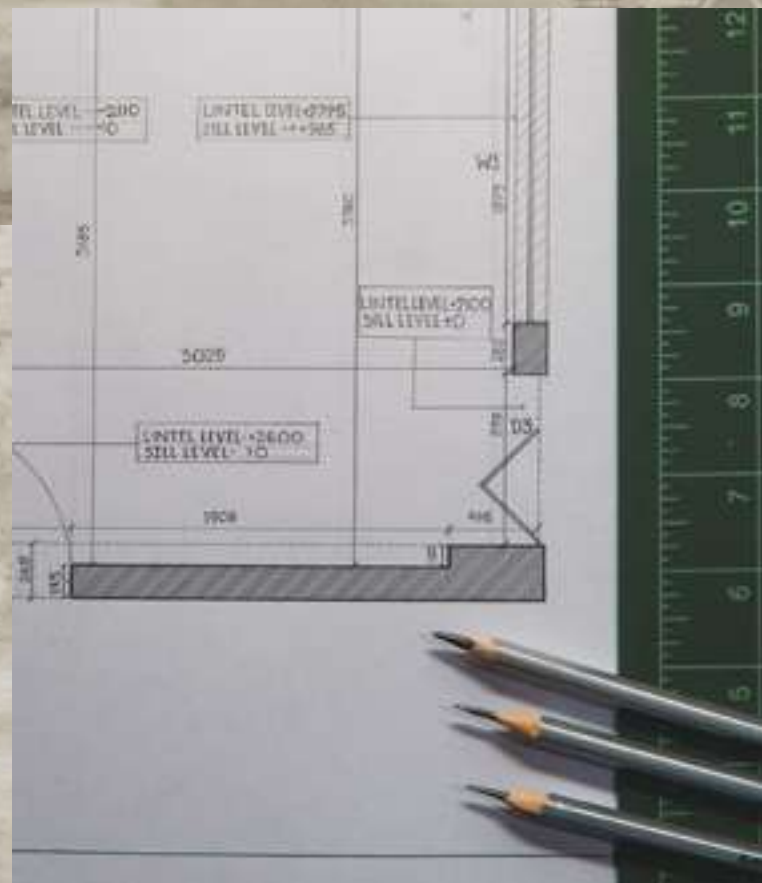
Inspired by resources that have been given a new purpose. Creatively transformed to blend diverse elements into one-of-a-kind designs.



(from left to right)
Eero Blueprint in Salvage,
Raw Wood in Sandy,
Woven Stone in Fossil,
Overprint in Layered,
ashlar installation

Each pattern within the
Repurposed Materials Collection
tells a unique story. Imagine
stepping onto a mosaic of
reclaimed wood, as it intertwines
with architectural plans, forming
a layering of patterns that pay
homage to the craftsmanship of
the past.

Toggle icons explore 4 patterns



Eero Blueprint

The Eero Blueprint pattern seamlessly merges the intricate art of architectural blueprints with the legacy of reclaimed wood from architectural salvage yards. This collection prioritizes the preservation of each piece's distinctive character and historical essence, while seamlessly integrating them into innovative modern architectural concepts.

Eero Blueprint in Salvage, ashlar installation



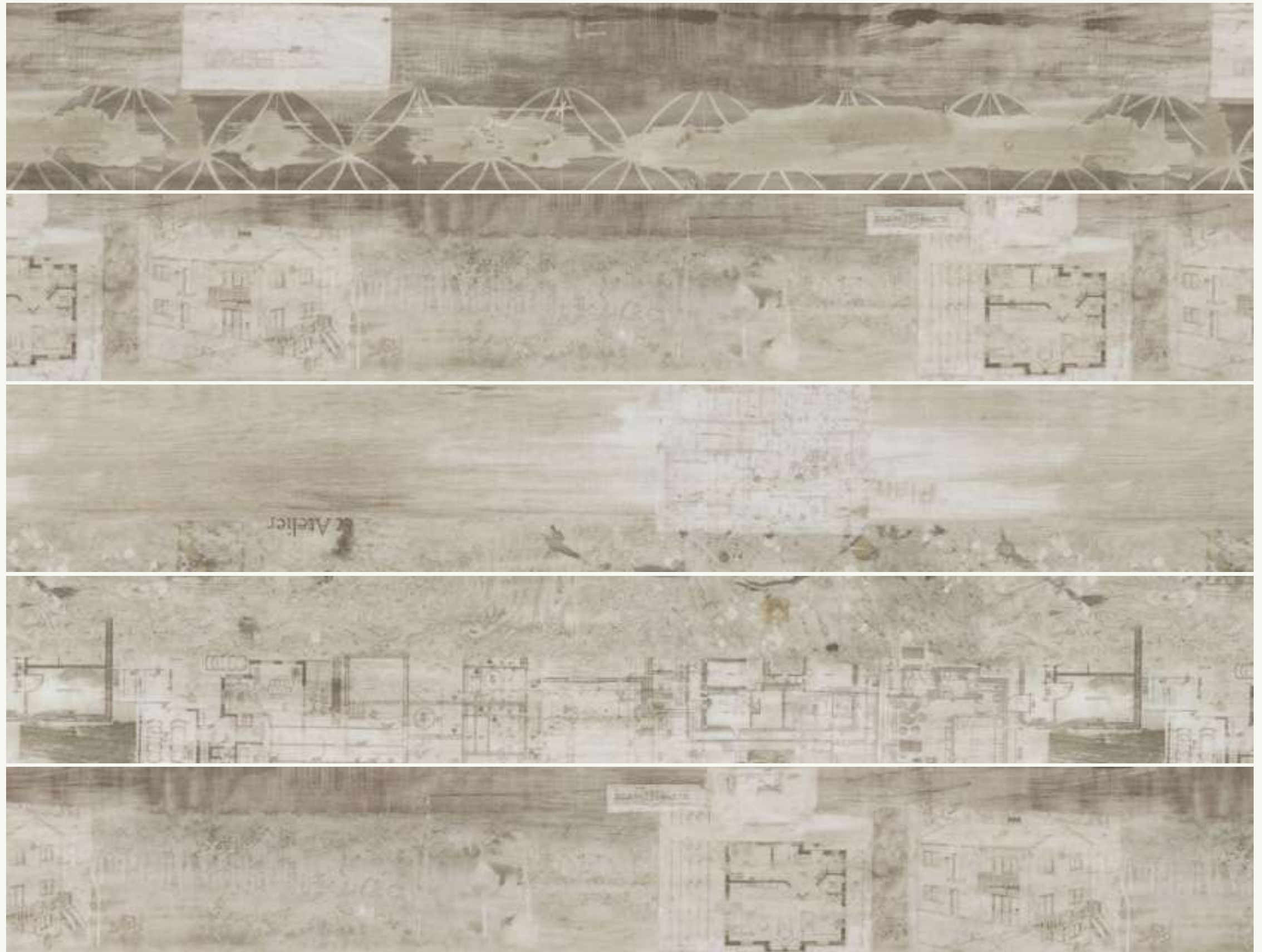
PATTERN EXPLANATION

Eero Blueprint

Celebrating the craftsmanship of detailed blueprints, it accentuates the uniqueness of reclaimed wood, fostering a harmonious blend of history, precision, and creativity in every design. This design has a multi-tile repeat.



EERO BLUEPRINT IN SALVAGE



COLORS

Eero Blueprint

Tile Size: 152.4 CM * 22.8 CM



EER114-121-207 Sketch



EER217-44-251 Salvage



EER44-213-208 Restored



EER234-209-215 Diagram





Raw Wood

Raw Wood serves as a pure foundation for crafting distinctive design expressions that seamlessly meld with its coordinating patterns. The pattern embraces the raw, unembellished texture of wood, inviting you to imprint their individual creativity onto its versatile surface.



Raw Wood in Earthy, ashlar installation

COLORS

Raw Wood

Tile Size: 152.4 CM * 22.8 CM

RW219-217 Sandy



RW21-121 Earthy

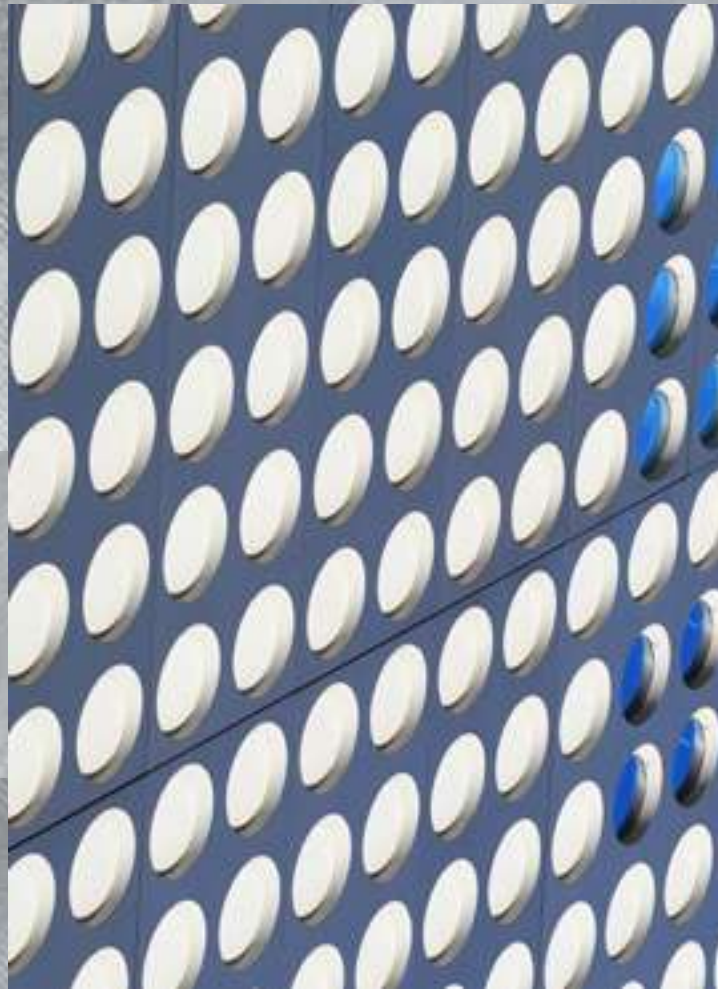


RW211-22 Draft



RW69-44 Revival





Overprint

The Overprint design artfully combines the timeless essence of stone with a contemporary graphic pattern, resulting in a design that epitomizes the concept of overprinting. By layering the inherent character of stone with a modern graphical motif, this collection achieves a captivating juxtaposition of styles.



Overprint in Interlaced, ashlar installation

COLORS

Overprint

Tile Size: 152.4 CM * 22.8 CM

The Overprint planks invite the viewer to appreciate the interplay between tradition and innovation, where the raw beauty of stone is invigorated by the energy of a modern aesthetic.

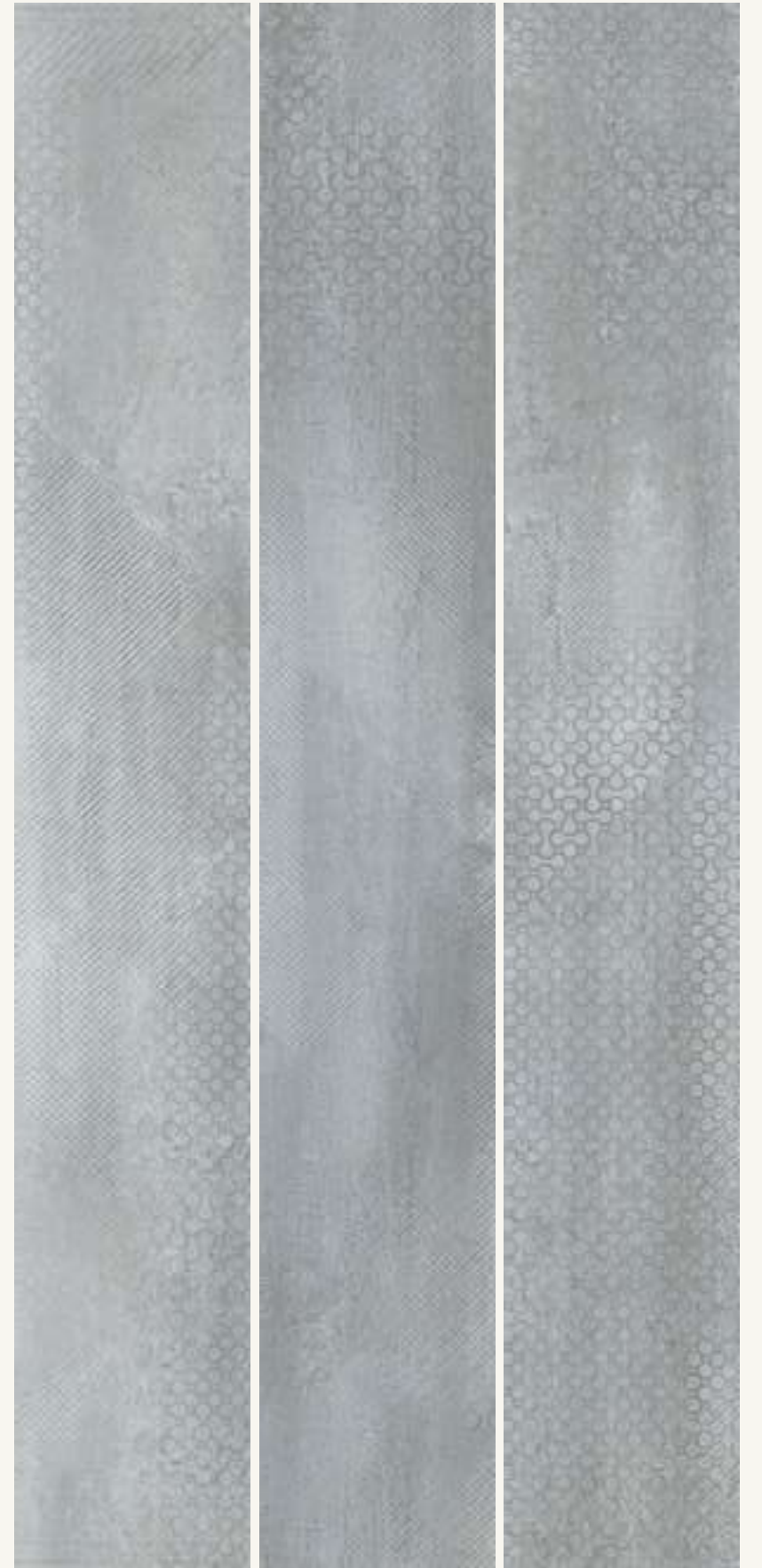
OP251-217 Layered

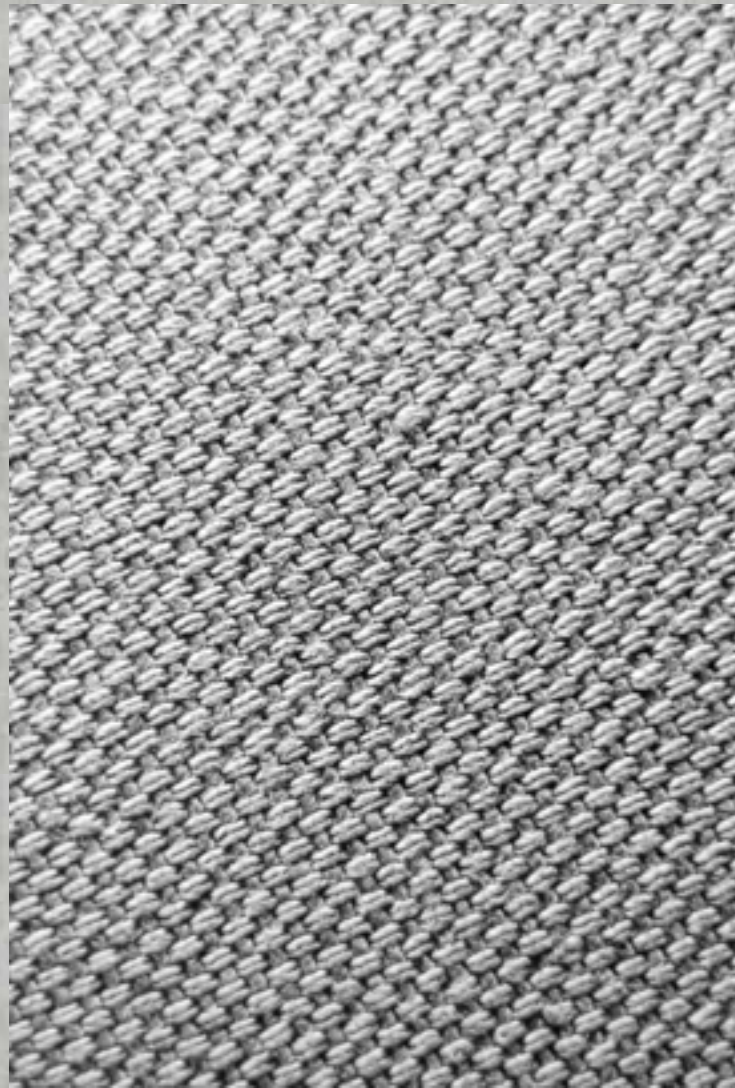


OP235-218 Mosaic



OP209-215 Interlaced





Woven Stone

Woven Stone is a combination of a woven textile intertwining with a stone-like texture, capturing the essence of a harmonious interplay between fabric and stone, crafting a design narrative that transcends traditional boundaries.



Woven Stone in Blend, ashlar installation

COLORS

Woven Stone

Tile Size : 152.4 CM * 22.8 CM

WS217 Fossil



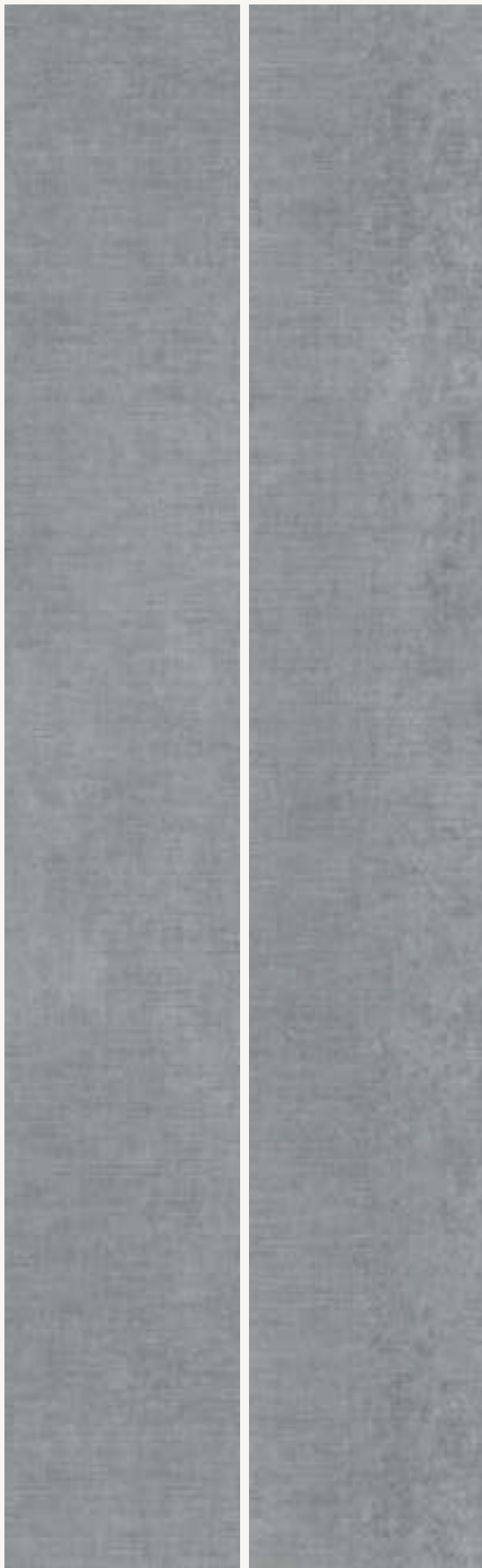
WS209 Blend



WS218 Infusion



WS153 Swatch



WS234 Merge



COLORLINE

Overprint



OP251-217 Layered



OP235-218 Mosaic

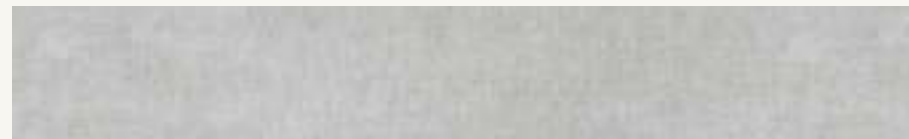


OP209-215 Interlaced

Woven Stone



WS217 Fossil



WS209 Blend



WS218 Infusion



WS153 Swatch



WS234 Merge

Raw Wood



RW219-217 Sandy



RW21-121 Earthy



RW211-22 Draft



RW69-44 Revival

Eero Blueprint



EER114-121-207 Sketch



EER217-44-251 Salvage



EER44-213-208 Restored



EER234-209-215 Diagram





Overprint in Mosaic,
Eero Blueprint in Restored,
herringbone installation

EXPLORE A RANGE OF DESIGN POTENTIAL

Offering 4 color group design for different working space, hospitality, and education area.

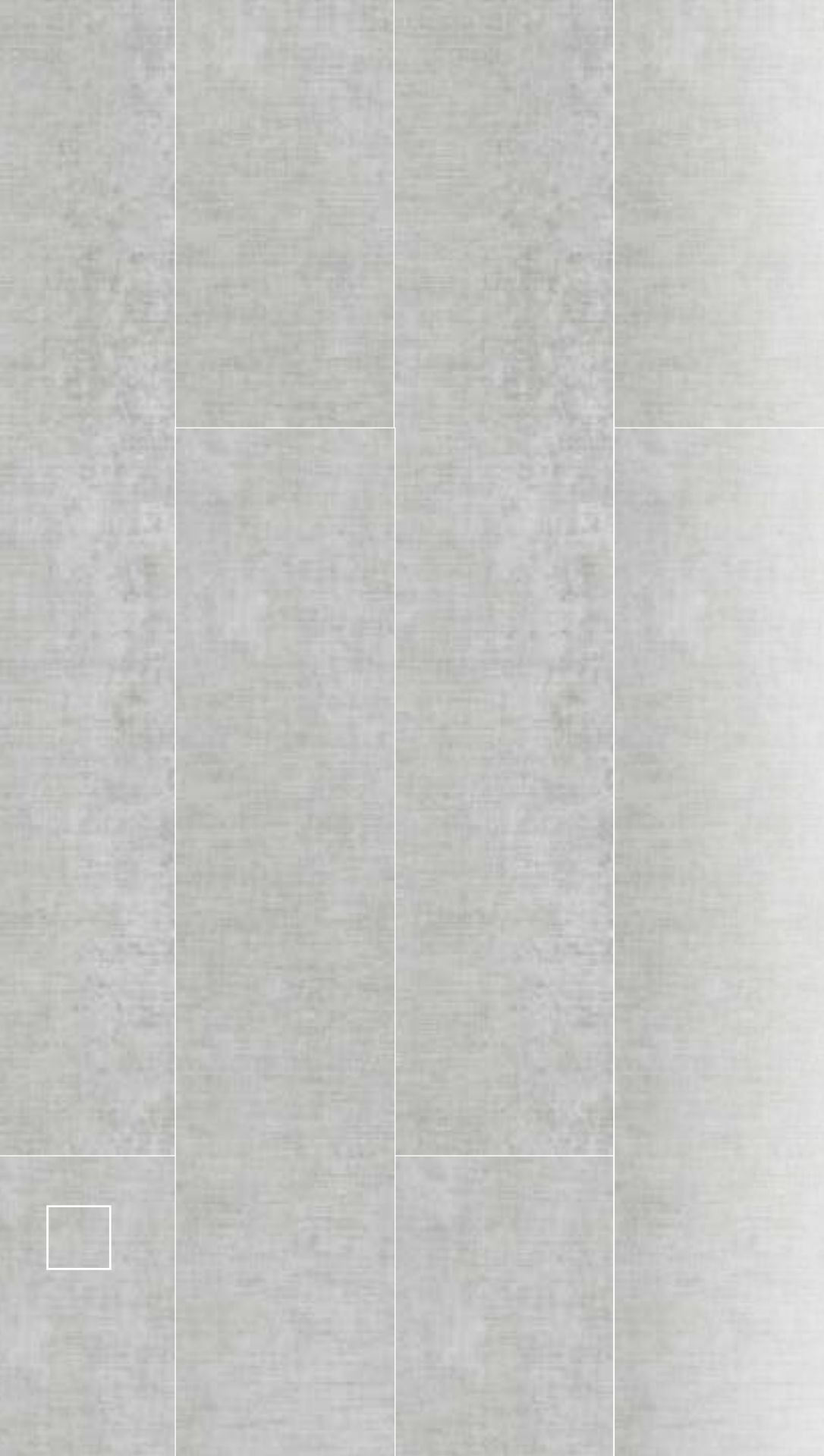
The Repurposed Materials offerings showcase a variety of colors, sizes, and patterns, opening the door for endless design possibilities. The modular framework lends itself to effortless replacement and low maintenance, making it easier than ever to maintain a pristine interior.



(from front to back) Overprint in Mosaic,
Woven Stone in Infusion and Blend, ashlar installation



(border) Woven Stone in Infusion,
(field) Eero Blueprint in Restored, ashlar installation



Woven Stone in Blend, ashlar installation

Product Coordination



WS209
Blend



Hues 2.0
SAT144-6-135
Saffron



(border)Woven Stone in Blend,
(field)Hues 2.0 Collection, Saturates in Saffron, ashlar installation



Raw Wood in Sandy,
Woven Stone in Fossil,
Eero Blueprint in Salvage,
Overprint in Layered,
herringbone installation



EXPLORE A RANGE OF DESIGN POTENTIAL

Offering 4 color group design for different working space, hospitality, and education area.

The Repurposed Materials offerings showcase a variety of colors, sizes, and patterns, opening the door for endless design possibilities. The modular framework lends itself to effortless replacement and low maintenance, making it easier than ever to maintain a pristine interior.



(border) Woven Stone in Fossil, (field) Eero Blueprint in Salvage, ashlar installation
(back) City Proper 2.0 Collection, EC1 in Suburb, monolithic installation





(border) Eero Blueprint in Salvage, ashlar installation
(field) Living Facades Collection, Lattice in Mindful Practice, monolithic installation



EXPLORE A RANGE OF DESIGN POTENTIAL

Offering 4 color group design for different working space, hospitality, and education area.

The Repurposed Materials offerings showcase a variety of colors, sizes, and patterns, opening the door for endless design possibilities. The modular framework lends itself to effortless replacement and low maintenance, making it easier than ever to maintain a pristine interior.

(field) Raw Wood in Draft,
(border) Eero Blueprint in Sketch,
ashlar installation



Eero Blueprint in Sketch, ashlar installation



Raw Wood in Earthy, Eero Blueprint in Sketch, ashlar installation

Raw Wood in Earthy and Draft,
Eero Blueprint in Sketch,
ashlar installation





(from left to right) Raw Wood in Earthy and Draft, ashlar installation

Product Coordination



Mixed Formations
GUN210-206-211
Tan

RW211-22 Draft



(field) Mixed Formations collection, Gunnison in Tan, (border) Raw Wood in Draft, ashlar installation



EXPLORE A RANGE OF DESIGN POTENTIAL

Offering 4 color group design for different working space, hospitality, and education area.

The Repurposed Materials offerings showcase a variety of colors, sizes, and patterns, opening the door for endless design possibilities. The modular framework lends itself to effortless replacement and low maintenance, making it easier than ever to maintain a pristine interior.

Overprint in Interlaced,
Woven Stone in Swatch and Merge,
ashlar installation





Eero Blueprint in Diagram,
Overprint in Interlaced,
Woven Stone in Swatch and Merge,
herringbone installation



Overprint in Interlaced, Woven Stone in Swatch and Merge, ashlar installation



Eero Blueprint in Diagram, Woven Stone in Swatch, ashlar installation



Overprint in Interlaced, Eero Blueprint in Diagram, ashlar installation



(left) Woven Stone in Interlaced, ashlar installation (right) Divided Glass collection, Cascade in Moon Cascade, monolithic installation



(left) Eero Blueprint in Diagram, (right) Heavy Meta collection, Foundry in Foil, ashlar installation



(from back to front)
Eero Blueprint in Sketch,
Raw Wood in Earthy,
ashlar installation

REPURPOSED MATERIALS

FLEXFORM™ LVT

Construction

High Performance Flexform™ LVT

Finish

ProGuard™ Reinforced Polyurethane Coating

Overall Thickness

5mm

Wear Layer Thickness

0.55mm

Edge Profile

Micro Bevel

Tile Sizes

228.6mm x1524mm

Pieces Per Box

6

Weight Per Box

20.54kg

Quantity Per Box

2.09 m²

Critical Radiant Flux (ISO 9239-1)

≥ 4.5kW/m²

Smoke Rate(ISO 9239-1)

<750%.min

Use Classification (ISO 10582)

Class 33 Heavy Commercial

Colour Fastness to Light (ISO 105-B02)

≥ 6

Slip Resistance (DIN 51130)

R10

Dimensional Stability (ISO 23999)

≤ 0.25 % ; Curl ≤ 2mm

Resistance to Chemicals (ASTM F925)

Pass

Residual Indentation (ISO 24343-1)

≤ 0.1mm

Castor Chair Resistance (ISO 4918)

Pass

Flexibility(ISO 24344)

Pass

Warranties

15-Year Limited Commercial Wear

产品结构

高性能弹性地板

表层工艺

ProGuard™ 增强聚氨酯涂层

总厚度

5mm

耐磨层厚度

0.55mm

倒角类型

微倒角

单片尺寸

228.6mm x1524mm

每箱片数

6 片

每箱重量

20.54kg

每箱数量

2.09 m²

临界辐射通量 (阻燃性) (ISO 9239-1)

≥ 4.5kW/m²

产烟量 (ISO 9239-1)

<750%.min

应用分级 (ISO 10582)

商业重度 33 级

光照色牢度 (ISO 105-B02)

≥ 6

防滑性能 (DIN 51130)

R10

加热尺寸稳定性及翘曲 (ISO 23999)

≤ 0.25 % ; 翘曲 ≤ 2mm

耐化学性能 (ASTM F925)

通过

残余凹陷 (ISO 24343-1)

≤ 0.1mm

脚轮椅测试 (ISO 4918)

通过

柔韧性 (ISO 24344)

通过

质保

15 年商用耐磨层有限质保

FLEXFORM™ LVT that works Easier and Smarter



SUSTAINABILITY

In keeping with Milliken's long-standing culture of sustainability, our Luxury Vinyl Tile products are 100% Ortho-Phthalate free. They do not contain problematic post-consumer recycled material. Further, Milliken's Luxury Vinyl Tiles are certified to the most stringent global environmental standards.

For further information, visit:

millikenfloors.com/sustainability



WARRANTY

Milliken Luxury Vinyl Tile products are backed by a 15 year Heavy Commercial warranty, ensuring quality and giving peace of mind.

FLEXFORM™ LVT CONSTRUCTION



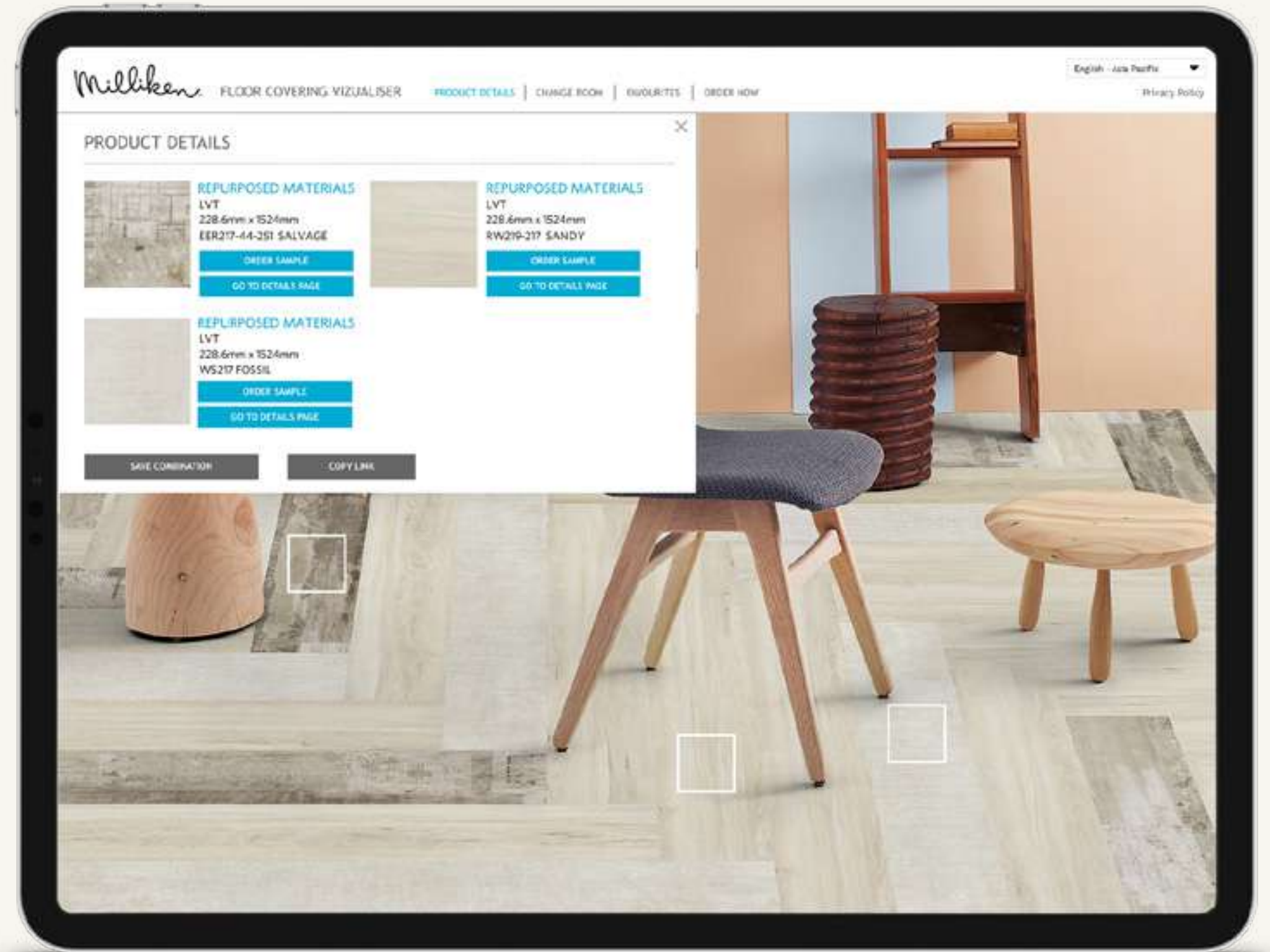
**OVERALL
THICKNESS**
5mm

**WEAR LAYER
THICKNESS**
0.55 mm

- 1. PROGUARD™ REINFORCED POLYURETHANE COATING**
Integrated surface technology provides best in class scratch & stain resistance, eliminates the need for additional finishes or harsh chemical treatments.
- 2. 0.55MM TRANSPARENT WEAR LAYER**
Heavy commercial grade 0.55mm transparent wear layer protects the print visuals and ensures product performs in heavy foot traffic.
- 3. DESIGN PHOTOGRAPHIC FILM**
State of the art printing technology providing authentic visuals and designs.
- 4. HIGH DENSITY CORE**
Ensures excellent durability, stability and long term performance.
- 5. GLASS FIBER LAYER**
Supports dimensional stability.
- 6. HIGH DENSITY CORE**
Ensures excellent durability, stability and long term performance.
- 7. VINYL BACKING LAYER**
Engineered balance layer provides stability and durability of the product.

VIEW REPURPOSED MATERIALS IN YOUR SPACE

Use the online visualiser to view different layouts of Repurposed Materials. Simply upload a photograph of your space and let the visualiser do the rest.



M/PACT™

CARBON NEUTRAL PROGRAM

REPURPOSED MATERIALS A CARBON NEUTRAL COLLECTION

Climate change is one of the greatest threats facing humanity. Today, our carpet, LVT are carbon neutral everywhere in the world. We invite you to learn more about the significant changes we've made, then let's work together to design a better future.





REPURPOSED MATERIALS

LVT ENVIRONMENTAL STANDARDS

Milliken LVT is highly durable resilient flooring engineered with the highest quality raw materials to provide unsurpassed performance and enduring aesthetics. Milliken LVT is 100% ortho-phthalate-free. Milliken LVT is manufactured at facilities that are ISO 9001 and ISO 14001 compliant.



Milliken™

© 2023 Milliken & Company | Design © Milliken & Company

Eero Blueprint in Salvage, Overprint in Layered, ashlar installation

Declare.

Specifications are subject to normal manufacturing tolerances and may be changed without prior notice. Images in this brochure are approximate for color and pattern scale. Please use actual product samples to make your final selections.